

**B. Estimated Revenues From Local Sources**

244 Total Revenue From Local Sources (line 7910, col 6)

28,939,725	29,899,515	32,418,862	8.43%
------------	------------	------------	-------

--

**C. Regional School Districts' Approved Budgets**

247 Total Assessments Received From Members (line 8270, col 6)

28,438,507	29,573,119	32,088,533	8.51%
------------	------------	------------	-------

--

**D. Average Teacher Salary FY18 through FY20**

250 Total Teacher Salaries

251 N of FTE Teachers

252 Average Teacher Salary

FY18	FY19	FY20	Change FY19-FY20
11,825,337	12,374,629	12,621,610	2.00%
145.9	149.7	146.6	-2.08%
81,051	82,663	86,100	4.16%

Please review and correct any reporting errors

**E. Title I Maintenance of Effort**

255 Total Expenditures (If FY20 is &lt; 90% of FY19, MOE is not met)

FY18	FY19	FY20	FY20 % of FY19
30,101,780	31,805,445	32,289,397	101.52%

**F. IDEA Maintenance of Effort**

258 Total Expenditures (If FY20 is &lt; 100% of FY19, MOE is not met)

FY18	FY19	FY20	FY20 % of FY19
8,198,259	9,256,346	9,520,313	102.85%

### Schedule 19 Annual School Budget 2019, 2020 and 2021

[illegible]

Reports Page 7 of 8

185 Outside the District Vocational-Technical (line 4200, col 5)  
186 Total Expenditures and Depreciation (line 4290, col 5)  
187 Total Pupils Transported (line 4290, col 9)


### Schedule 19 Annual School Budget 2019, 2020 and 2021

193 Administration (1000) (line 7010, col 6)  
194 Instruction (2000) (line 7030, col 6)  
195 Pupil Transportation (3300) (line 7050, col 6)  
196 Operations and Maintenance (4000) (line 7080, col 6)  
197 Extraordinary Maintenance (4300) (line 7090, col 6)  
198 Employer Retirement Contributions (5100) (line 7100, col 6)  
199 Employee Separation Costs (5150) (line 7105, col 6)  
200 Insurance for Active Employees (5200) (line 7110, col 6)  
201 Insurance for Retired School Employees (5250) (line 7120, col 6)  
202 Other Non-Employee Insurance (5260) (line 7130, col 6)  
203 Rent (5300) (line 7140, col 6)  
204 Debt Service - Short-Term Interest RAN's (5400) (line 7150, col 6)  
205 Short Term Interest-BAN's (5450) (line 7155, col 6)  
206 Other Fixed Charges (5500) (line 7160, col 6)  
207 Fixed Assets (7000) (line 7190, col 6)  
208 Long-Term Debt Retirement/Sch Construction (8100) (line 7200, col 6)  
209 Long-Term Debt Service/Sch Construction (8200) (line 7210, col 6)  
210 Long-Term Debt Service/Educ and Other (8400, 8600) (line 7270, col 6)  
211 Payments to Other Districts (9100, 9200, 9300) (lines 7280, 7300, & 7305, col 6)  
212 School Choice/Charter Schools (9110, 9120, 9125) (lines 7285, 7290, & 7295, col 6)  
213 Charter Transportation Tuition (9130) (line 7296, col 6)  
214 Payments to Collaboratives (9400) (line 7310, col 6)  
215 Total Appropriation by School Committee (line 7320, col 6)

[illegible]

Comparison of Selected Data Items Reported in FY18 through FY20 (continued)

				Please review and correct any reporting errors
<u>Schedule 3 Instruction Expenditures, School Committee</u>				
149 Curriculum Directors (Supervisory) (2110) (line 3409, col 6)	895,109	1,053,640	980,539	-6.94%
150 Department Heads (Non-Supervisory) (2120) (line 3419, col 6)	0	0	0	0.00%
151 Instructional Technology Leadership and Training (2130) (line 3427, col 6) *		0	0	0.00%
152 School Leadership-Building (2210) (line 3434, col 6)	1,366,820	1,328,671	1,342,357	1.03%
153 Curriculum Leaders/Department Heads-Building Level (2220)				
154 Administrative Technology and Support – Schools (2250) (line 3449, col 6)	390,679	11,071	2,685	-75.75%
155 Teachers, Classroom (2305) (line 3450, col 6)	11,180,426	11,722,455	12,167,169	3.79%
156 Teachers, Specialists (2310)				
157 Instructional Coordinators and Team Leaders (2315)				
158 Medical/ Therapeutic Services (2320) (line 3459, col 6)	590,980	730,026	733,032	0.41%
159 Substitutes, Long Term (2324) (line 3465, col 6)	17,835	70,938	16,591	-76.61%
160 Substitutes, Short Term (2325) (line 3469, col 6)	175,433	178,779	112,378	-37.14%
161 Non-Clerical Paraprofs./Instructional Assistants (2330) (line 3475, col 6)	1,377,940	1,375,370	1,064,783	-22.58%
162 Librarians and Media Center Directors (2340) (line 3479, col 6)	367,004	452,521	422,338	-6.67%
163 Distance Learning and Online Coursework (2345) (line 3486, col 6) *		0	0	0.00%
164 Professional Development Leadership (2351) (line 3493, col 6)	0	0	0	0.00%
165 Instructional Coaches (2352) (line 3498, col 6)	0	15,945	12,887	-19.18%
166 Teacher/Instructional Staff-Professional Days (2353)				
167 Stipends for Teachers Providing Instructional Coaching (2354) (line 3499, col 6)	16,985	0	0	0.00%
168 Substitutes for Instructional Staff at Prof. Development (2355)				
169 Costs for Instructional Staff to Attend Prof. Dev. (2356) (line 3505, col 6)	76,129	95,691	85,136	-11.03%
170 Prof. Development Stipends, Providers and Expenses (2357)				
171 Outside Professional Development for Instructional Staff (2358) (line 3509, col 6)	47,186	49,472	33,569	-32.15%
172 Textbooks (2410) (line 3511, col 6)	23,291	18,191	7,122	-60.85%
173 Other Instructional Materials (2415) (line 3519, col 6)	20,334	19,182	15,222	-20.65%
174 Instructional Equipment (2420) (line 3529, col 6)	247,594	160,977	150,875	-6.28%
175 General Supplies (2430) (line 3535, col 6)	124,477	316,924	121,801	-61.57%
176 Other Instructional Services (2440) (line 3544, col 6)	1,603	1,465	1,676	14.39%
177 Instructional Hardware –Student and Staff Devices (computers) (2451) (line 3548, col 6)	405,368	339,662	384,729	13.27%
178 Instructional Hardware—All Other (2453) (line 3552, col 6)	3,752	4,655	4,029	-13.45%
179 Instructional Software and Other Instructional Materials (2455) (line 3556, col 6)	0	0	0	0.00%
180 Guidance Counselors and Adjustment Counselors (2710) (line 3569, col 6)	823,536	862,756	865,408	0.31%
181 Testing and Assessment (2720) (line 3579, col 6)	795	690	1,274	84.53%
182 Psychological Services (2800) (line 3589, col 6)	244,083	255,255	261,500	2.45%
183 Total Instruction (2000) (line 3599, col 6)	18,397,358	19,064,337	18,787,100	-1.45%

**Comparison of Selected Data Items Reported in FY18 through FY20 (continued)**

<b>Schedule 1 - IIB City and Town Expenditures</b>					<b>Please review and correct any reporting errors</b>
	<b>FY18</b>	<b>FY19</b>	<b>FY20</b>	<b>Change FY19-FY20</b>	
110	Extraordinary Maintenance (4300) (line 1990, col 6)	0	0	0	0.00%
111	Employer Retirement Contributions (5100) (line 2000, col 6)	0	0	0	0.00%
112	Employee Separation Costs (5150) (line 2007, col 6)	0	0	0	0.00%
113	Insurance for Active Employees (5200) (line 2010, col 6)	0	0	0	0.00%
114	Insurance for Retired School Employees (5250) (line 2020, col 6)	0	0	0	0.00%
115	Other Non-Employee Insurance (5260) (line 2030, col 6)	0	0	0	0.00%
116	Short-Term Interest RAN's (5400) (line 2060, col 6)	0	0	0	0.00%
117	Short-Term Interest - BAN's (5450) (line 2065, col 6)	0	0	0	0.00%
118	Other Fixed Charges (5500) (line 2070, col 6)	0	0	0	0.00%
119	Purchase of Land and Buildings (7100, 7200) (line 2100, col 6)	0	0	0	0.00%
120	Long-Term Debt Retirement/Sch Construction (8100) (line 2130, col 6)	0	0	0	0.00%
121	Long-Term Debt Service/Sch Construction (8200) (line 2140, col 6)	0	0	0	0.00%
122	Long-Term Debt Service/Educ & Other (8400,8600) (line 2200, col 6)	0	0	0	0.00%
123	Tuition to Mass. Public Schools (9100) (line 2210, col 6)	0	0	0	0.00%
124	School Choice Tuition (9110) (line 2220, col 6)	0	0	0	0.00%
125	Tuition to Commonwealth Charter Schools (9120) (lines 2230, col 6)	0	0	0	0.00%
126	Tuition to Horace Mann Charter Schools (9125) (line 2235, col 6)	0	0	0	0.00%
127	Tuition to Out-of-State Schools (9200) (line 2240, col 6)	0	0	0	0.00%
128	Tuition to Non-Public Schools (9300) (line 2250, col 6)	0	0	0	0.00%
129	Tuition to Collaboratives (9400) (line 2260, col 6)	0	0	0	0.00%
130	Regional School Assessment (9500) (line 2270, col 6)	0	0	0	0.00%
131	Total Expenditures by City or Town (line 2290, col 6)	0	0	0	0.00%
<b><u>Schedule C2 Expenditures From Grants &amp; Special Funds</u></b>					
133	Total, ESE Administered Federal Grants (line 3080, cols 1, 2, 3)	564,647	615,375	602,252	-2.13%
134	Total, Other Federal Grants (line 3080, col 4)	12,624	13,030	13,465	3.34%
135	Total, ESE Administered State Grants (line 3080, col 5)	0	0	0	0.00%
136	Total, Other State Grants (line 3080, col 6)	74,990	72,041	73,576	2.13%
137	Total, Circuit Breaker (line 3080, col 7)	924,160	1,094,160	1,102,223	0.74%
138	Total, Private Grants and Gifts (line 3080, col 8)	256,991	83,853	74,382	-11.29%
139	Total, School Choice and Other Day Tuition (line 3080, col 9)	317,442	383,772	459,991	19.86%
140	Total, Athletics and Other Student Activities (line 3080, col 10)	329,716	235,085	184,289	-21.61%
141	Total, School Lunch (line 3080, col 11)	533,979	551,918	392,664	-28.85%
142	Total, Other Local Receipts (line 3080, col 12)	255,969	215,256	198,096	-7.97%
<b><u>Schedule 2 Assessments Received From Members</u></b>					
144	Total Assessments Received from Members (line 3370, col 6)	26,607,448	28,438,507	29,571,568	3.98%

**675 Hamilton Wenham**

FY18	FY19	FY20	Change FY19-FY20
27,380,533	29,059,116	29,708,552	2.23%

**Please review  
and correct any  
reporting  
errors**

29,927	29,579	37,192	25.74%
303,728	303,969	298,012	-1.96%
0	0	0	0.00%
0	0	0	0.00%
609,256	623,189	486,933	-21.86%
49,892	61,333	74,054	20.74%
23,510	9,350	20,720	121.61%
78,260	69,917	49,203	-29.63%
124,813	0	0	0.00%
0	0	0	0.00%
327,085	342,186	394,144	15.18%
1,281,071	1,391,496	1,409,495	1.29%
39,638	31,773	158,279	398.15%
336,494	499,285	424,499	-14.98%
70,310	77,512	87,005	12.25%
0	0	0	0.00%
1,234,514	1,287,416	1,363,207	5.89%
12,923	45,619	78,676	72.46%
1,917,260	2,106,361	2,261,934	7.39%
690,874	677,646	742,354	9.55%
77,812	77,053	84,867	10.14%
0	0	15,669	100.00%
0	0	0	0.00%
0	0	0	0.00%
0	7,733	23,310	201.44%
0	0	13,773	100.00%
0	0	125,000	100.00%
2,092,860	2,090,275	247,950	-88.14%
182,409	195,551	201,278	2.93%
98,665	71,094	135,174	90.13%
7,943	24,070	0	-100.00%
0	0	0	0.00%
207,429	307,462	382,341	24.35%
1,174,293	1,112,889	1,752,657	57.49%
603,116	684,643	486,864	-28.89%
32,270,889	33,093,369	32,734,860	-3.65%

[illegible]

32,272,888 Page 33 of 33,369

	<b>FY21 Budgeted Net School Spending 675 Hamilton Wenham</b>	<b>School Committee</b>	<b>City or Town</b>	<b>Total</b>
40	23. Administration (1000)	1,229,833	0	1,229,833
41	24. Instruction (2000)	19,679,151	0	19,679,151
42	25. Attendance-Health (3100, 3200)	377,857	0	377,857
43	26. Food Services (3400)	85,256		85,256
44	27. Athletics/Student Activities/ Security (3500,3600)	645,374	0	645,374
45	28. Maintenance (4000)	2,285,061	0	2,285,061
46	29. Employee Benefits (5100)	1,866,116	0	1,866,116
47	30. Insurance (5200)	2,670,185	0	2,670,185
48	31. Retired Employee Insurance (5250)	822,645	0	822,645
49	32. Rentals (5300)	15,670	0	15,670
50	33. Short Term Interest RAN's (5400)	0	0	0
51	34. Tuition (9000)	4,761,992	0	4,761,992
52	35. Total School Spending (23 through 34)	34,439,140	0	34,439,140
53	36. Revenues			
54	36a) FY21 Budgeted School Revenues	18,000		18,000
55	36b) Projected FY21 Charter Reimbursement (Local Districts)		0	0
56	36c) Subtotal, Net School Spending Revenues (36a+36b)	18,000	0	18,000
57				
58	37. Net School Spending (35 - 36)	34,421,140	0	34,421,140
59	38. FY21 Required Net School Spending			18,910,528
60	39. Carry-Over Into FY21 (21)			0
61	40. Total FY21 Requirement (38 + 39)			18,910,528
62	41. Deficiency (40 - 37)			0

	<b>FY20 Net School Spending 675 Hamilton Wenham</b>	<b>School Committee</b>	<b>City or Town</b>		<b>Total</b>
10	1. Administration (1000)	966,114	0	<FY20 Budget	966,114
11	2. Instruction (2000)	18,787,100	0	<FY20 Budget	18,787,100
12	3. Attendance-Health (3100, 3200)	394,144	0	<FY20 Budget	394,144
13	4. Food Services (3400)	158,279			158,279
14	5. Athletics/Student Activities/ Security (3500,3600)	511,504	0		511,504
15	6. Maintenance (4000)	2,593,170	0	<FY20 Budget	2,593,170
16	7. Employee Benefits (5100)	1,441,883	0		1,441,883
17	8. Insurance (5200)	2,346,801	0		2,346,801
18	9. Retired Employee Insurance (5250)	742,354	0		742,354
19	10. Rentals (5300)	15,669	0	<FY20 Budget	15,669
20	11. Short Term Interest RAN's (5400)	0	0		0
21	12. Tuition (9000)	2,958,314	0		2,958,314
22	13. Total School Spending (1 through 12)	30,915,332	0		30,915,332
23	14. School Revenues				
24	14a) FY20 School Revenues	4,000		<FY20 Budget	4,000
25	14b) FY20 Charter Reimbursement		0		0
26	14c) Subtotal, School Revenues (14a+14b)	4,000	0		4,000
27					
28	15. Net School Spending (13 - 14c)	30,911,332	0		30,911,332
29	16. FY20 Required Net School Spending				18,329,786
30	17. FY19 Carry-Over Into FY20				0
31	18. Total FY20 Requirement (16 + 17)				18,329,786
32	19. Unexpended Net School Spending (18 - 15)				0
33	20. Percent Unexpended (19 / 16)				0.00%
34	21. FY20 Carry-Over (19 or 5% of 16 or 0 if 17 > 0)				0
35	22. Penalty (19 - 21)				0

Total

Net

A

SC Revenue



**EXPENDITURE SUMMARY FY20**  
**ALL FUND TYPES**

	1	2	3	4	5	6	7	8	9	10	11
	SCH COMM APPROP- RATIONS	CITY/TOWN APPROP- RATIONS	FEDERAL GRANTS	STATE GRANTS	CIRCUIT BREAKER	PRIVATE GRANTS & GIFTS	SCH CHOICE & OTHER TUITION	ATHLETIC FUND	SCHOOL LUNCH	OTHER LOCAL RECEIPTS	TOTAL
1293	8570	Employer Retirement Contributions (5100)	1,363,207	0	5,330	391	0	0	0	0	1,368,928
1294	8572	Employee Separation Costs (5150)	78,676	0	0	0	0	0	0	0	78,676
1295	8575	Insurance for Active Employees (5200)	2,261,934	0	0	0	0	0	0	0	2,261,934
1296	8580	Insurance for Retired School Employees (5250)	742,354	0	0	0	0	0	0	0	742,354
1297	8585	Other Non-Employee Insurance (5260)	84,867	0	0	0	0	0	0	17,392	102,259
1298	8590	Rental Lease of Equipment (5300)	15,669	0	0	0	0	0	0	0	15,669
1299	8595	Rental Lease of Buildings (5350)	0	0	0	6,750	0	0	0	0	6,750
1300	8600	Short Term Interest RAN's (5400)	0	0	0	0	0	0	0	0	0
1301	8605	Short Term Interest BAN'S (5450)	23,310	0	0	0	0	0	0	0	23,310
1302	8610	Other Fixed Charges (5500)	13,773	0	0	0	0	0	0	0	13,773
1303	8612	School Crossing Guards (5550)	0	0	0	0	0	0	0	0	0
1304	8615	Indirect Cost Transfers		0	0		0	0	0	0	0
1305	8620	Civic Activities and Community Services (6200)	0	0	0		0	0	0	0	0
1306	8625	Recreation Services (6300)	0	0	0		0	0	0	0	0
1307	8630	Health Services to Non-Public Schools (6800)	0	0	0		0	0	0	0	0
1308	8635	Transportation To Non-Public Schools (6900)	0	0	0		0	0	0	0	0
1309	8640	Purchase of Land & Buildings (7100, 7200)	125,000	0	0		17,753	0	0	0	142,753
1310	8645	Equipment (7300, 7400)	0	0	0		0	0	0	0	0
1311	8650	Capital Technology (7350)	0	0	0		0	0	0	0	0
1312	8655	Motor Vehicles (7500, 7600)	0	0	0		0	0	0	0	0
1313	8660	Debt Retirement/Sch Construction (8100)	185,000	0	0		0		0	0	185,000
1314	8665	Debt Service/Sch Construction (8200)	62,950	0	0		0		0	0	62,950
1315	8670	Debt Service/Educ. & Other (8400, 8600)	0	0	0		0		0	0	0
1316	8675	Tuition to Mass. Schools (9100)	201,278	0	0	0	0	0	0	0	201,278
1317	8680	School Choice Tuition (9110)	135,174	0							135,174
1318	8685	Tuition to Commonwealth Charter Schools (9120)	0	0							0
1319	8690	Tuition to Horace Mann Charter Schools (9120)	0	0	0	0	0	0	0	0	0
1320	8691	Charter Transportation Tuition (9130)	0	0							0
1321	8695	Tuition to Out-of-State Schools (9200)	382,341	0	0	0	0	0	0	0	382,341
1322	8700	Tuition to Non-Public Schools (9300)	1,752,657	0	0	1,102,223	0	0	0	0	2,854,880
1323	8705	Tuition to Collaboratives (9400)	486,864	0	0	0	0	0	0	0	486,864
1324	8710	Regional School Assessment (9500)		0							0
1325	8715	TOTAL EXPENDITURES, ALL FUNDS	32,734,860	0	615,717	73,576	1,102,223	74,382	459,991	184,289	35,835,798

EXPENDITURE SUMMARY FY20  
ALL FUND TYPES

1	2	3	4	5	6	7	8	9	10	11
SCH COMM APPROP- RIATIONS	CITY/TOWN APPROP- RIATIONS	FEDERAL GRANTS	STATE GRANTS	CIRCUIT BREAKER	PRIVATE GRANTS & GIFTS	SCH CHOICE & OTHER TUITION	ATHLETIC FUND	SCHOOL LUNCH	OTHER LOCAL RECEIPTS	TOTAL

1266	8435	Instructional Equipment (2420)	150,875		0	998	0	33,199	6,444		0	191,516
1267	8440	General Supplies (2430)	121,801		0	2,796	0	0	3,049		11,425	139,071
1268	8445	Other Instructional Services (2440)	1,676	58,433	10,732	0	1,583	0			0	72,424
1269	8450	Instructional Hardware—Student and Staff Devices (computers) (2445)	384,729	0	0	0	0	0			72,843	457,572
1270	8455	Instructional Hardware—All Other (2453)	4,029	0	0	0	0	0			0	4,029
1271	8460	Instructional Software and Other Instructional Materials (2455)	0	7,650	0	0	13,691	0			0	21,341
1272	8465	Guidance Counselors and Adjustment Counselors (2710)	865,408	0	0	0	0	0			25,895	891,303
1273	8470	Testing and Assessment (2720)	1,274	0	0	0	0	0			15	1,289
1274	8475	Psychological Services (2800)	261,500	0	0	0	0	0			0	261,500
1275	8480	TOTAL INSTRUCTION (2000)	18,787,100	0	610,387	14,695	0	49,071	459,991		111,058	20,032,202
1276	8485	Attendance and Parent Liaison Services (3100)	0	0	47,886	0	0	0	0	0	0	47,886
1277	8490	Medical/Health Services (3200)	394,144	0	0	0	0	0	0	0	0	394,144
1278	8495	Transportation Services (3300)	1,409,495	0	0	0	0	0	0	0	0	1,409,495
1279	8500	Food Services (3400)	158,279	0	0	0	0	0	0	392,012	0	550,291
1280	8505	Athletics (3510)	424,499	0	0	0	0	0	184,289	0	15,215	624,003
1281	8510	Other Student Body Activities (3520)	87,005	0	2,400	0	7,558	0	0	0	41,927	138,890
1282	8515	School Security (3600)	0	0	0	0	0	0	0	0	0	0
1283	8520	Custodial Services (4110)	969,051	0	0	0	0	0	0	0	12,132	981,183
1284	8525	Heating of Buildings (4120)	187,630	0	0	0	0	0	0	0	0	187,630
1285	8530	Utility Services (4130)	354,134	0	652	0	0	0	0	652	0	355,438
1286	8535	Maintenance of Grounds (4210)	0	0	0	0	0	0	0	0	0	0
1287	8540	Maintenance of Buildings (4220)	561,112	0	0	0	0	0	0	0	372	561,484
1288	8545	Building Security System (4225)	0	0	0	0	0	0	0	0	0	0
1289	8550	Maintenance of Equipment (4230)	0	0	0	0	0	0	0	0	0	0
1290	8555	Extraordinary Maintenance (4300)	0	0	0	0	0	0	0	0	0	0
1291	8560	Technology Infrastructure, Maintenance, and Support—Salaries (4400)	431,350	0	902	0	0	0	0	0	0	432,252
1292	8565	Technology Infrastructure, Maintenance, and Support—All Other (4405)	89,893	0	0	0	0	0	0	0	0	89,893

**EXPENDITURE SUMMARY FY20**  
**ALL FUND TYPES**

1	2	3	4	5	6	7	8	9	10	11
SCH COMM APPROP- RIATIONS	CITY/TOWN APPROP- RIATIONS	FEDERAL GRANTS	STATE GRANTS	CIRCUIT BREAKER	PRIVATE GRANTS & GIFTS	SCH CHOICE & OTHER TUITION	ATHLETIC FUND	SCHOOL LUNCH	OTHER LOCAL RECEIPTS	TOTAL

1238	8300	School Committee (1110)	37,192	0	0	0	0	0	0	0	37,192
1239	8305	Superintendent (1210)	298,012	0	0	0	0	0	0	0	298,012
1240	8310	Assistant Superintendents (1220)	0	0	0	0	0	0	0	0	0
1241	8315	Other District-Wide Administration (1230)	0	0	0	0	0	0	0	0	0
1242	8320	Business and Finance (1410)	486,933	0	0	0	0	0	0	0	486,933
1243	8325	Human Resources and Benefits (1420)	74,054	0	0	0	0	0	0	0	74,054
1244	8330	Legal Service For School Committee (1430)	20,720	0	0	0	0	0	0	0	20,720
1245	8335	Legal Settlements (1435)	49,203	0	0	0	0	0	0	0	49,203
1246	8340	Administrative Technology-Districtwide (1450)	0	0	0	0	0	0	0	0	0
1247	8345	Curriculum Directors and Dept. Heads (Supervisory) (2110)	980,539	28,000	0	0	0	0	0	1,008,539	
1248	8350	Curriculum Directors and Dept. Heads (Non-Supervisory) (2120)	0	0	0	0	0	0	0	0	0
1249	8355	Instructional Technology Leadership and Training (2130)	0	0	0	0	0	0	0	0	0
1250	8360	School Leadership-Building (2210)	1,342,357	0	0	0	0	0	0	1,342,357	
1251	8365	Administrative Technology and Support - Schools (2250)	2,685	0	0	0	0	0	0	2,685	
1252	8370	Teachers (2305)	12,167,169	3,943	0	0	450,498	0	0	12,621,610	
1253	8385	Medical/ Therapeutic Services (2320)	733,032	297	0	0	0	0	0	733,329	
1254	8391	Substitutes, Long Term (2324)	16,591	0	0	0	0	0	0	16,591	
1255	8392	Substitutes, Short Term (2325)	112,378	0	0	0	0	0	0	112,378	
1256	8395	Non-Clerical Paraprofs./Instructional Assistants (2330)	1,064,783	474,324	0	0	0	0	0	1,539,107	
1257	8400	Librarians and Media Center Directors (2340)	422,338	0	0	0	0	0	880	423,218	
1258	8401	Distance Learning and Online Coursework (2345) (Including Tuition	0	0	0	0	0	0	0	0	0
1259	8405	Professional Development Leadership (2351)	0	0	0	0	0	0	0	0	0
1260	8409	Instructional Coaches (2352)	12,887	0	0	0	0	0	0	12,887	
1261	8413	Stipends for Instructional Coaching (2354)	0	0	0	0	0	0	0	0	0
1262	8417	Costs for Instructional Staff to Attend Prof. Dev. (2356)	85,136	3,718	0	540	0	0	0	89,394	
1263	8421	Outside Prof. Dev. Providers for Instructional Staff (2358)	33,569	34,022	0	0	0	0	0	67,591	
1264	8425	Textbooks (2410)	7,122	0	69	58	0	0	0	7,249	
1265	8430	Other Instructional Materials (2415)	15,222	0	0	0	0	0	0	15,222	

**C. 2020 - 2021 REGIONAL SCHOOL DISTRICTS  
APPROVED BUDGETS**

1	2	3	4	5	6	7	8
MEMBER CITY/TOWN CODE	MINIMUM LOCAL CON- TRIBUTION	ADDITIONAL LOCAL CON- TRIBUTION	TRANSP & OTHER EXP EXPENDITURES	CAPITAL & DEBT EXP EXPENDITURES	TOTAL	ASSESSMENT APPROVED BY MEMBER TOWNS	BUDGETED EXCESS AND DEFICIENCY

**MEMBER CITY/TOWN CODE AND NAME**

1202	8000	HAMILTON	119	20,227,834		263,903	20,491,737	138,786
1203	8010	WENHAM	320	11,447,446		149,350	11,596,796	78,543
1204	8020					0		
1205	8030					0		
1206	8040					0		
1207	8050					0		
1208	8060					0		
1209	8070					0		
1210	8080					0		
1211	8090					0		
1212	8100					0		
1213	8110					0		
1214	8120					0		
1215	8130					0		
1216	8140					0		
1217	8150					0		
1218	8160					0		
1219	8170					0		
1220	8180					0		
1221	8190					0		
1222	8200					0		
1223	8210					0		
1224	8220					0		
1225	8230					0		
1226	8240					0		
1227	8250					0		
1228	8260					0		
1229	8270	TOTAL ASSESSMENTS RECEIVED FROM MEMBERS		31,675,280	0	413,253	32,088,533	217,329

Please mark  
with an "X"  
assessment  
method used  
for FY21

(Check only on

statutory ☐

alternative ☒

**SCHEDULE 19**

**ANNUAL SCHOOL BUDGET**

**2020 - 2021**

**B. ESTIMATED REVENUES-GENERAL FUND**

**REVENUES FROM LOCAL SOURCES FY21**

1	2	3	4	5	6
REGULAR DAY	SPECIAL EDUCATION	CH 74 VOC- ATIONAL/ TECHNICAL	OTHER PROGRAMS	UNDISTRIB- UTED	TOTAL

1182	7800	Assessments Received by Regional Schools				32,088,533	32,088,533
1183	7810	Excess & Deficiency Fund Approp				217,329	217,329
1184	7820	Tuition From Individuals					0
1185	7830	Tuition From Other Districts in Comm.					0
1186	7840	Tuition From Districts in Other States					0
1187	7850	Transportation Fees					0
1188	7860	Earnings on Investments				18,000	18,000
1189	7870	Rental of School Facilities					0
1190	7880	Other General Fund Revenue					0
1191	7890	Medical Care and Assistance		95,000			95,000
1192	7900	Non Revenue Receipts					0
1193	7910	TOTAL REVENUE FROM LOCAL SOURCES	0	95,000	0	32,323,862	32,418,862

SCHEDULE 19

ANNUAL SCHOOL BUDGET  
2020 - 2021

1	2	3	4	5	6
REGULAR DAY	SPECIAL EDUCATION	CH 74 VOC- ATIONAL/ TECHNICAL	OTHER PROGRAMS	UNDISTRIB- UTED	TOTAL

A.2 ESTIMATED EXPENDITURES BY CITY/TOWN

1142	7400	General Administrative Services (1000)					0
1143	7420	Educational Media (2340, 2415)					0
1144	7430	Pupil Support Services (3100,3200)					0
1145	7440	Pupil Transportation (3300)					0
1146	7445	School Security (3600)					0
1147	7450	Operations and Maintenance (4000)					0
1148	7460	Extraordinary Maintenance (4300)					0
1149	7470	Employer Retirement Contributions (5100)					0
1150	7475	Employee Separation Costs (5150)					0
1151	7480	Insurance for Active Employees (5200)					0
1152	7490	Insurance Retired School Employees (5250)					0
1153	7500	Other Non-Employee Insurance (5260)					0
1154	7510	Rent (5300)					0
1155	7515	Debt Service-Short Term Interest RAN's (5400)					0
1156	7520	Debt Service-Short Term Interest BANS (5450)					0
1157	7530	Other Fixed Charges (5500)					0
1158	7535	School Crossing Guards (5550)					0
1159	7540	Other Community Services (6000)					0
1160	7550	Non-Public Transportation (6300)					0
1161	7560	Fixed Assets (7000)					0
1162	7570	Long-Term Debt Retirement/Sch Construction (8100)					0
1163	7580	Long-Term Debt Service/Sch Construction (8200)					0
1164	7640	Long-Term Debt Service/Educ & Other (8400,8600)					0
1165	7645	Tuition to Mass. Public Schools (9100)	0				0
1166	7650	School Choice Tuition (9110)	0	0			0
1167	7655	Tuition to Commonwealth Charter Schools (9120)	0	0			0
1168	7660	Tuition to Horace Mann Charter Schools (9125)					0
1169	7661	Charter Transportation Tuition (9130)			0		0
1170	7665	Tuition to Out-of-State Schools (9200)					0
1171	7670	Tuition to Non-Public Schools (9300)					0
1172	7675	Tuition to Collaboratives (9400)					0
1173	7680	Regional School Assessments (9500)					0
1174	7690	TOTAL EXPENDITURES BY CITY/TOWN	0	0	0	0	0
1175	7750	TOTAL ESTIMATED EXPENDITURES	13,495,862	10,881,270	0	12,118,982	36,496,114

SCHEDULE 19

ANNUAL SCHOOL BUDGET  
2020 - 2021

1	2	3	4	5	6
REGULAR DAY	SPECIAL EDUCATION	CH 74 VOC- ATIONAL/ TECHNICAL	OTHER PROGRAMS	UNDISTRI- B- UTED	TOTAL

A.1 APPROPRIATION BY SCHOOL COMMITTEE

1097	7010	Administration(1000)				1,229,833	1,229,833
1098	7030	Instruction (2000)	12,484,096	5,512,523		1,682,532	19,679,151
1099	7040	Student Services (3100,3200)				377,857	377,857
1100	7050	Pupil Transportation (3300)	851,290	767,231			1,618,521
1101	7060	Food Service (3400)				85,256	85,256
1102	7070	Student Body Activities (3510,3520)				588,776	588,776
1103	7075	School Security (3600)				56,598	56,598
1104	7080	Operations and Maintenance (4000)				2,285,061	2,285,061
1105	7090	Extraordinary Maintenance (4300)					0
1106	7100	Employer Retirement Contributions (5100)				1,472,390	1,472,390
1107	7105	Employee Separation Costs (5150)				393,726	393,726
1108	7110	Insurance for Active Employees (5200)				2,572,423	2,572,423
1109	7120	Insurance Retired School Employees (5250)				822,645	822,645
1110	7130	Other Non Employee Insurance (5260)				97,762	97,762
1111	7140	Rent (5300)				15,670	15,670
1112	7150	Debt Service-Short Term Interest RAN's (5400)					0
1113	7155	Debt Service-Short Term Interest-BANS (5450)				165,003	165,003
1114	7160	Other Fixed Charges (5500)					0
1115	7165	School Crossing Guards (5550)				25,200	25,200
1116	7170	Other Community Services (6000)					0
1117	7180	Non-Public Transportation (6300)					0
1118	7190	Fixed Assets (7000)					0
1119	7200	Long-Term Debt Retirement/Sch Construction (8100)				190,000	190,000
1120	7210	Long-Term Debt Service/Sch Construction (8200)				58,250	58,250
1121	7270	Long-Term Debt Service/Educ. & Other (8400,8500)					0
1122	7280	Tuition to Mass. Public Schools (9100)		209,674			209,674
1123	7285	School Choice Tuition (9110)	160,476		0		160,476
1124	7290	Tuition to Commonwealth Charter Schools (9120)	0	0			0
1125	7295	Tuition to Horace Mann Charter Schools (9125)					0
1126	7296	Charter Transportation Tuition (9130)				0	0
1127	7300	Tuition to Out-of-State Schools (9200)		257,026			257,026
1128	7305	Tuition to Non-Public Schools (9300)		3,538,793			3,538,793
1129	7310	Tuition to Collaboratives (9400)		596,023			596,023
1130	7320	TOTAL APPROPRIATION BY SCHOOL COMMITTEE	13,495,862	10,881,270	0	0	12,118,982
							36,496,114

## Schedule 18 Survey

Please answer questions 1-13 as they pertain to your district's current teacher's contract. If your contract has expired, please answer based on the scale being used this year through a memorandum of agreement or evergreen clause. **Enter NA** for any items that do not apply to your district.

				Response
10.	Based on the health insurance plans that are available in your district, what are your district's highest and lowest <u>employer</u> shares for health insurance for active and retired employees?	<u>Employer</u> share: Active employees	Highest %	60.0%
			Lowest %	60.0%
		<u>Employer</u> share: Retired employees	Highest %	60.0%
			Lowest %	60.0%
11.	Did you change accounting system software in the past year			No
12.	If yes, what accounting system does your district now use (please indicate what software version)?			Infinite Visions
13.	Does your district use DESE function codes in the coding structure in your accounting software or is a crosswalk needed?			We use DESE code



## Schedule 18 Survey

Please answer questions 1-13 as they pertain to your district's current teacher's contract. If your contract has expired, please answer based on the scale being used this year through a memorandum of agreement or evergreen clause. **Enter NA** for any items that do not apply to your district.

				Response
1.	What are the effective dates (start and end dates) of your current teacher's contract?	Start (m/d/yy)		9/1/18
		End (m/d/yy)		8/31/21
2.	What are the annual negotiated salary increases (% COLA) provided for in your current teacher contract? Provide all relevant years.	FY18		2.5%
		FY19		2.5%
		FY20		2.3%
		FY21		2.0%
3.	Please provide the number of lanes in your current teacher salary schedule.	N lanes		6
4.	What are the lowest step, step 5, and top step salary amounts (\$/year) for the bachelors, masters, and highest lane in your FY20 teacher salary schedule? Do not include longevity or other credits.	Lowest step	Bachelors	\$48,845.00
			Masters	\$51,265.00
			Highest	\$59,912.00
		Step 5	Bachelors	\$57,431.00
			Masters	\$59,858.00
			Highest	\$69,384.00
		Highest step	Bachelors	\$70,722.00
			Masters	\$79,299.00
			Highest	\$93,941.00
5.	What is your teacher's contractual hourly rate (\$/hour) for work beyond the school day?			\$30.00
6.	What is your district's pay rate for daily, long-term, and retired teacher substitutes (\$/day)?	Daily		\$90.00
		Long-term		\$278.61
		Retirees		N/A
7.	Please provide the number of days specified in your teacher contract or otherwise in the following categories:	Teacher work year		184.0
		Instructional year		180.0
		Early release		2.0
8.	Please provide the number of early release days for professional development:			Every Wednesday
9.	Please provide the number of sick days, personal days, and max accumulation of sick days provided in your current teacher's contract:	N sick days		15
		N personal days		2
		Max accumulation		180

1	2	3	4	5	6	7	8	9
---	---	---	---	---	---	---	---	---

**PUPIL TRANSPORTATION REIMBURSEMENT  
FUNCTIONS 3300, 6900**

REIMBURSABLE		NON-REIM-BURSABLE			REIMBURSABLE		NON-REIM-BURSABLE	
EXPENDITURES FOR PUPILS TRANSPORTED AT LEAST 1 1/2 MILES TO AND FROM SCHOOL		EXPENDITURES FOR PUPILS TRANSPORTED	DEPRECIATION	TOTAL	REGULAR DAY RIDERS TRANSPORTED AT LEAST 1 1/2 MILES TO AND FROM SCHOOL		REGULAR DAY RIDERS TRANSPORTED LESS	TOTAL
SCHOOL TRANS VEHICLE	BY PUBLIC UTILITIES	LESS THAN 1 1/2 MILES FROM SCH	(See Instructions)	(Sum of 1 thru 4)	SCHOOL TRANS VEHICLE	BY PUBLIC UTILITIES	THAN 1 1/2 MILES FROM SCHOOL	(Sum of 6 thru 8)
REIMBURSABLE		NON-REIM-BURSABLE			REIMBURSABLE		NON-REIM-BURSABLE	
EXPENDITURES FOR VOCATIONAL PUPILS TRANSPORTED AT LEAST 1 1/2 MILES TO & FROM SCHOOL		EXPENDITURES FOR VOCATIONAL PUPILS TRANSPORTED < 1.5 MILES FROM SCH	DEPRECIATION	TOTAL	VOCATIONAL RIDERS TRANSPORTED AT LEAST 1 1/2 MILES TO AND FROM SCHOOL		VOCATIONAL RIDERS TRANSPORTED LESS	TOTAL
SCHOOL TRANS VEHICLE	BY PUBLIC UTILITIES		(See Instructions)	(Sum of 1 thru 4)	SCHOOL TRANS VEHICLE	BY PUBLIC UTILITIES	THAN 1 1/2 MILES FROM SCHOOL	(Sum of 6 thru 8)
				0				0
				0				0

			REIMBURSABLE		NON-REIM- BURSABLE	DEPRE-  CIATION  (See  Instructions)	TOTAL  (Sum of 1 thru 4)	REIMBURSABLE		NON-REIM- BURSABLE	TOTAL  (Sum of 6 thru 8)
			EXPENDITURES FOR NON-PUBLIC PUPLS TRANSPORTED AT LEAST 1 1/2 MILES TO & FROM SCHOOL		EXPENDITURES FOR NON-PUBLIC PUPLS TRANS- PORTED < 1 1/2 MILES FROM SCH			NON-PUBLIC RIDERS TRANSPORTED AT LEAST 1 1/2 MILES TO AND FROM SCHOOL		NON-PUBLIC RIDERS TRANS- PORTED LESS THAN 1 1/2 MILES FROM SCHOOL	
			SCHOOL TRANS	BY PUBLIC				SCHOOL TRANS	BY PUBLIC		
			VEHICLE	UTILITIES				VEHICLE	UTILITIES		
NON-PUBLIC TRANSPORTATION											
1065	4220	Within the District					0				0
1066	4230	Outside the District					0				0

**SCHEDULE 7 (CONTINUED)**

PUPIL TRANSPORTATION REIMBURSEMENT FUNCTIONS 3300, 6900		EXPENDITURES FOR PUPILS TRANSPORTED AT LEAST 1 1/2 MILES TO & FROM SCHOOL		EXPENDITURES FOR PUPILS TRANSPORTED LESS THAN 1 1/2 MILES FROM SCH	DEPRE- CIATION (See Instructions)	TOTAL (Sum of 1 thru 4)	RIDERS TRANSPORTED AT LEAST 1 1/2 MILES TO AND FROM SCHOOL		RIDERS TRANS- PORTED LESS THAN 1 1/2 MILES FROM SCHOOL	TOTAL (Sum of 6 thru 8)
OTHER PROGRAMS		SCHOOL TRANS VEHICLE	BY PUBLIC UTILITIES				SCHOOL TRANS VEHICLE	BY PUBLIC UTILITIES		
1075	4250	Racial Imbalance (NOT METCO)				0				0
1076	4260	To and From Day Care Centers				0				0
1077	4270	Other School Programs				0				0
1078	4280	School Choice / Commonwealth Charter Schools				0				0
1079	4283	Homeless Transportation To Outside the District				0				0
1080	4285	Homeless Transportation From Outside the District				0				0
1081	4286	Foster Care Transportation from Outside the District				0				0
1083	4290	TOTALS FOR ALL PROGRAMS	788,019	397,626	223,850	0	1,409,495	1,233	30	473

PUBLIC TRANSPORTATION AND PAYMENTS FROM REVOLVING/SPECIAL		EXPENDITURES				RIDERS			
1085	4310	PUBLIC TRANSPORTATION ASSESSMENT				0			
1086	4320	PAYMENTS FROM REVOLVING AND SPECIAL FUNDS				0			0

SCHEDULE 7

EXPENDITURES (Report Whole Dollars)					RIDERS			
1	2	3	4	5	6	7	8	9

PUPIL TRANSPORTATION REIMBURSEMENT  
FUNCTIONS 3300, 6900

	REGULAR EDUCATION	REIMBURSABLE		NON-REIM-BURSABLE		REIMBURSABLE		NON-REIM-BURSABLE	
		EXPENDITURES FOR PUPILS TRANSPORTED AT LEAST 1 1/2 MILES TO AND FROM SCHOOL	BY PUBLIC SCHOOL TRANS VEHICLE	EXPENDITURES FOR PUPILS TRANSPORTED LESS THAN 1 1/2 MILES FROM SCH	DEPRE-CATION (See instructions)	TOTAL (Sum of 1 thru 4)	REGULAR DAY RIDERS TRANSPORTED AT LEAST 1 1/2 MILES TO AND FROM SCHOOL	BY PUBLIC SCHOOL TRANS VEHICLE	REGULAR DAY RIDERS TRANSPORTED LESS THAN 1 1/2 MILES FROM SCHOOL
1034	4000	Within the District	575,952	223,850		799,802	1,217		473
1035	4010	Outside the District				0			0
1036	4020	To and from Regular Pre-School				0			0
1037	4040	TOTAL REGULAR EDUCATION	575,952	0	223,850	0	799,802	1,217	0
									473
									1,690

1041	4070	3-5 yr olds, all placements (doe032)	39,763	0		39,763	3		3
1042	4080	age 6-21, public school programs (doe034-10, 20, & 40)	172,305	0		172,305	13		13
1043	4110	age 6-21, public separate day school (doe034-41)		145,796		145,796		11	11
1044	4120	age 6-21, ages, private separate day school (doe034-50)		251,830		251,830		19	19
1045	4130	age 6-21, private residential school (doe034-60)				0			0
1046	4140	age 6-21, homebound/hospital (doe034-70)				0			0
1047	4150	age 6-21, public residential institutions (doe034-90)				0			0
1048	4160	TOTAL SPECIAL EDUCATION	212,067	397,626		0	609,693	16	30
									46

**SCHEDULE 4**

**SPECIAL EDUCATION EXPENDITURES  
BY PLACEMENT**

**EXPENDITURES BY SCHOOL COMMITTEE,  
CITY OR TOWN, AND CIRCUIT BREAKER**

1	2	3	4	5	6	7	8	9
3-5 Yr. Olds all placements (doe032- 30 - 48)	Age 6-21 Public School Programs (doe034-10, 20, & 40)	Age 6-21 Public Separate Day School (doe034-41)	Age 6-21 Private Separate Day School (doe034-50)	Age 6-21 Private Residential School (doe034-60)	Age 6-21 Homebound/ Hospital (doe034-70)	Age 6-21 Public Residential Institution (doe034-90)	Screening and Team Evaluation	TOTAL

**Instructional Services(2000)**

1004	3810	Supervisory (2100)	38,032	406,649	20,479	48,271	7,314	1,463		522,208
1005	3815	School Building Leadership (2200)	196	2,091	105	248	38	8		2,685
1006	3820	Teaching (2300)	298,502	3,191,670	160,732	378,867	57,404	11,481		4,098,656
1007	3830	Textbooks & Instructional Equipment (2400)	1,707	18,255	919	2,167	328	66		23,443
1008	3840	Guidance (2700)								0
1009	3850	Psychological (2800)	19,045	203,633	10,255	24,172	3,662	732		261,500
1010	3860	<b>TOTAL INSTRUCTIONAL SERVICES</b>	357,481	3,822,299	192,490	453,726	68,746	13,749	0	4,908,491
1011	3870	Non-Public Health Services (6800)								0

**Payments to Other Districts (9000)**

1013	3880	Tuition to Mass. Public Schools (9100)			201,278				0	201,278
1014	3885	School Choice Tuition (9110)	0	27,562	0	0	0	0		27,562
1015	3887	Tuition to Commonwealth Charter Schools (9120)		0						0
1016	3888	Tuition to Horace Mann Charter Schools (9120)								0
1017	3890	Tuition to Out-of-State Schools (9200)				38,500	343,841			382,341
1018	3900	Tuition to Private Schools (9300)				2,464,782	390,098			2,854,880
1019	3910	Tuition to Collaboratives (9400)			486,864					486,864
1020	3920	<b>TOTAL TUITION</b>	0	27,562	688,142	2,503,282	733,939	0	0	3,952,925
1021	3930	<b>EXP FROM GRANTS, REVOLVING FUNDS (NOT CB) (2000, 68</b>	13,465	449,562						463,027
1022	3950	<b>TOTAL EXPENDITURES</b>	370,946	4,299,423	880,632	2,957,008	802,685	13,749	0	9,324,443

**SCHEDULE 3**

**INSTRUCTIONAL EXPENDITURES**

INSTRUCTIONAL EXPENDITURES			8	9	10	11	12	13	14	15	16	17	18
			Federal Grants				State Grants		Revolving and Special Funds				Total
			Title I Fund Code	IDEA Fund Code	Other ESE- Administered Grants	Other	ESE Admin- istered	Other	Circuit Breaker	Private Grants & Gifts	Sch Choice & Other Day Tuition	Other Local Receipts	
II GRANTS AND OTHER FUNDING SOURCES			305	240	Grants	Other	Admin- istered	Other	Circuit Breaker	Private Grants & Gifts	Sch Choice & Other Day Tuition	Other Local Receipts	Total
Guidance including Guidance Counselors and Adjustment Counselors (2710)													
971	3761	Professional Salaries (01)	0	0	0	0	0	0	0	0	0	0	817,087
972	3762	Clerical Salaries (02)	0	0	0	0	0	0	0	0	0	0	40,328
973	3763	Other Salaries (03)	0	0	0	0	0	0	0	0	0	0	0
974	3764	Contracted Services (04)	0	0	0	0	0	0	0	0	0	25,895	31,791
975	3765	Supplies and Materials (05)	0	0	0	0	0	0	0	0	0	0	2,097
976	3766	Other Expenses (06)	0	0	0	0	0	0	0	0	0	0	0
975	3769	Sub-total	0	0	0	0	0	0	0	0	0	25,895	891,303
Testing and Assessment (2720)													
979	3771	Professional Salaries (01)	0	0	0	0	0	0	0	0	0	0	0
980	3772	Clerical Salaries (02)	0	0	0	0	0	0	0	0	0	0	0
981	3773	Other Salaries (03)	0	0	0	0	0	0	0	0	0	0	0
982	3774	Contracted Services (04)	0	0	0	0	0	0	0	0	0	0	1,274
983	3775	Supplies and Materials (05)	0	0	0	0	0	0	0	0	0	15	15
984	3776	Other Expenses (06)	0	0	0	0	0	0	0	0	0	0	0
985	3779	Sub-total	0	0	0	0	0	0	0	0	0	15	1,289
Psychological Services (2800)													
987	3781	Professional Salaries (01)	0	0	0	0	0	0	0	0	0	0	253,393
988	3782	Clerical Salaries (02)	0	0	0	0	0	0	0	0	0	0	0
989	3783	Other Salaries (03)	0	0	0	0	0	0	0	0	0	0	0
990	3784	Contracted Services (04)	0	0	0	0	0	0	0	0	0	0	0
991	3785	Supplies and Materials (05)	0	0	0	0	0	0	0	0	0	0	8,107
992	3786	Other Expenses (06)	0	0	0	0	0	0	0	0	0	0	0
993	3789	Sub-total	0	0	0	0	0	0	0	0	0	0	261,500
994	3799	TOTAL INSTRUCTIONAL SERVICES (2000)	110,745	449,562	36,615	13,465	0	14,595	0	49,071	459,991	111,058	20,032,202

**SCHEDULE 3**  
**INSTRUCTIONAL EXPENDITURES**

INSTRUCTIONAL EXPENDITURES																	
	8	9	10	11	12	13	14	15	16	17	18						
Federal Grants					State Grants		Revolving and Special Funds										
	Title I Fund Code 305	IDEA Fund Code 240	Other ESE- Administered Grants	Other	ESE Admin- istered	Other	Circuit Breaker	Private Grants & Gifts	Sch Choice & Other Day Tuition	Other Local Receipts	Total						
II GRANTS AND OTHER FUNDING SOURCES																	
Instructional Equipment (2420)																	
943	3724	Contracted Services (04)	0	0	0	0	0	0	6,444	0	6,444						
944	3725	Supplies and Materials (05)	0	0	0	0	998	0	33,199	0	91,827						
945	3726	Other Expenses (06)	0	0	0	0	0	0	0	0	93,245						
946	3729	Sub-total	0	0	0	0	998	0	33,199	6,444	191,516						
General Supplies (2430)																	
948	3735	Supplies and Materials (05)	0	0	0	0	2,796	0	0	3,049	11,425	139,071					
Other Instructional Services (2440)																	
950	3740	Other Salaries (03)	48,247	0	0	0	0	0	0	0	48,247						
951	3741	Contracted Services (04)	0	10,186	0	0	10,732	0	750	0	21,668						
952	3742	Supplies and Materials (05)	0	0	0	0	0	0	833	0	833						
953	3743	Other Expenses (06)	0	0	0	0	0	0	0	0	1,676						
954	3744	Sub-total	48,247	10,186	0	0	10,732	0	1,583	0	72,424						
Instructional Hardware—Student and Staff Devices (computers) (2451)																	
956	3745	Contracted Services (04)	0	0	0	0	0	0	0	0	155,618						
957	3746	Supplies and Materials (05)	0	0	0	0	0	0	0	63,659	282,797						
958	3747	Other Expenses (06)	0	0	0	0	0	0	0	9,184	19,157						
959	3748	Sub-total	0	0	0	0	0	0	0	72,843	457,572						
Instructional Hardware—All Other (2453)																	
961	3749	Contracted Services (04)	0	0	0	0	0	0	0	0	0						
962	3750	Supplies and Materials (05)	0	0	0	0	0	0	0	0	4,029						
963	3751	Other Expenses (06)	0	0	0	0	0	0	0	0	0						
964	3752	Sub-total	0	0	0	0	0	0	0	0	4,029						
Instructional Software and Other Instructional Materials (2455)																	
966	3753	Contracted Services (04)	0	0	0	0	0	0	0	0	0						
967	3754	Supplies and Materials (05)	7,650	0	0	0	0	0	13,691	0	21,341						
968	3755	Other Expenses (06)	0	0	0	0	0	0	0	0	0						
969	3756	Sub-total	7,650	0	0	0	0	0	13,691	0	21,341						

**SCHEDULE 3**

**INSTRUCTIONAL EXPENDITURES**

8	9	10	11	12	13	14	15	16	17	18
Federal Grants				State Grants		Revolving and Special Funds				Total
Title I Fund Code	IDEA Fund Code	Other ESE- Administered	Other	ESE Admin- istered	Other	Circuit Breaker	Private Grants & Gifts	Sch Choice & Other Day Tuition	Other Local Receipts	
305	240	Grants								

**II GRANTS AND OTHER FUNDING SOURCES**

<b>Instructional Coaches (2352)</b>										
917	3695	Professional Salaries (01)	0	0	0	0	0	0	0	0
918	3696	Contracted Services (04)	0	0	0	0	0	0	0	0
919	3697	Supplies and Materials (05)	0	0	0	0	0	0	0	0
920	3698	Other Expenses (06)	0	0	0	0	0	0	0	12,887
921	3699	<b>Sub-total</b>	0	0	0	0	0	0	0	12,887
<b>Stipends for Teachers Providing Instructional Coaching (2354)</b>										
923	3700	Professional Salaries (01)	0	0	0	0	0	0	0	0
<b>Costs for Instructional Staff to Attend Professional Development (2356)</b>										
925	3701	Professional Salaries (01)	0	0	0	0	0	540	0	880
926	3702	Other Salaries (03)	0	0	0	0	0	0	0	18,968
927	3703	Supplies and Materials (05)	0	0	0	0	0	0	0	0
928	3704	Other Expenses (06)	0	275	3,443	0	0	0	0	69,546
929	3705	<b>Sub-total</b>	0	275	3,443	0	0	540	0	89,394
<b>Outside Professional Development Providers for Instructional Staff (2358)</b>										
931	3706	Contracted Services (04)	0	0	15,839	0	0	0	0	20,175
932	3707	Supplies and Materials (05)	0	0	0	0	0	0	0	0
933	3708	Other Expenses (06)	850	0	17,333	0	0	0	0	47,416
934	3709	<b>Sub-total</b>	850	0	33,172	0	0	0	0	67,591
<b>Textbooks (2410)</b>										
936	3711	Supplies and Materials (05)	0	0	0	0	69	0	58	7,249
<b>Other Instructional Materials (2415)</b>										
938	3714	Contracted Services (04)	0	0	0	0	0	0	0	1,500
939	3715	Supplies and Materials (05)	0	0	0	0	0	0	0	13,722
940	3716	Other Expenses (06)	0	0	0	0	0	0	0	0
941	3719	<b>Sub-total</b>	0	0	0	0	0	0	0	15,222

**SCHEDULE 3**  
**INSTRUCTIONAL EXPENDITURES**

INSTRUCTIONAL EXPENDITURES			8	9	10	11	12	13	14	15	16	17	18
			Federal Grants				State Grants		Revolving and Special Funds				Total
			Title I Fund Code 305	IDEA Fund Code 240	Other ESE- Administered Grants	Other	ESE Admin- istered	Other	Circuit Breaker	Private Grants & Gifts	Sch Choice & Other Day Tuition	Other Local Receipts	
II GRANTS AND OTHER FUNDING SOURCES			305	240	Grants	Other	Admin- istered	Other	Circuit Breaker	Private Grants & Gifts	Sch Choice & Other Day Tuition	Other Local Receipts	Total
Substitutes, Long Term (2324)													
886	3662	Professional Salaries (01)	0	0	0	0	0	0	0	0	0	0	0
887	3663	Other Salaries (03)	0	0	0	0	0	0	0	0	0	0	16,591
888	3664	Contracted Services (04)	0	0	0	0	0	0	0	0	0	0	0
889	3665	Sub-total	0	0	0	0	0	0	0	0	0	0	16,591
Substitutes, Short Term (2325)													
891	3667	Other Salaries (03)	0	0	0	0	0	0	0	0	0	0	112,378
892	3668	Contracted Services (04)	0	0	0	0	0	0	0	0	0	0	0
893	3669	Sub-total	0	0	0	0	0	0	0	0	0	0	112,378
All Non-Clerical Paraprofessionals/Instructional Assistants (2330)													
895	3673	Other Salaries (03)	53,998	406,861	0	13,465	0	0	0	0	0	0	1,516,587
896	3674	Contracted Services (04)	0	0	0	0	0	0	0	0	0	0	22,520
897	3675	Sub-total	53,998	406,861	0	13,465	0	0	0	0	0	0	1,539,107
Librarians and Media Center Directors (2340)													
899	3676	Professional Salaries (01)	0	0	0	0	0	0	0	0	0	0	422,338
900	3677	Clerical Salaries (02)	0	0	0	0	0	0	0	0	0	0	0
901	3678	Other Salaries (03)	0	0	0	0	0	0	0	0	0	880	880
902	3679	Sub-total	0	0	0	0	0	0	0	0	0	880	423,218
Distance Learning and Online Coursework (2345) (Including Tuition for Dual Enrollment and SPED Transition Programs)													
904	3681	Contracted Services (04)	0	0	0	0	0	0	0	0	0	0	0
905	3682	Supplies and Materials (05)	0	0	0	0	0	0	0	0	0	0	0
906	3685	Other Expenses (06)	0	0	0	0	0	0	0	0	0	0	0
907	3686	Sub-total	0	0	0	0	0	0	0	0	0	0	0
Professional Development Leadership (2351)													
909	3688	Professional Salaries (01)	0	0	0	0	0	0	0	0	0	0	0
910	3689	Clerical Salaries (02)	0	0	0	0	0	0	0	0	0	0	0
911	3690	Other Salaries (03)	0	0	0	0	0	0	0	0	0	0	0
912	3691	Contracted Services (04)	0	0	0	0	0	0	0	0	0	0	0
913	3692	Supplies and Materials (05)	0	0	0	0	0	0	0	0	0	0	0
914	3693	Other Expenses (06)	0	0	0	0	0	0	0	0	0	0	0
915	3694	Sub-total	0	0	0	0	0	0	0	0	0	0	0



SCHEDULE 3

INSTRUCTIONAL EXPENDITURES

INSTRUCTIONAL EXPENDITURES			8	9	10	11	12	13	14	15	16	17	18
			Federal Grants				State Grants		Revolving and Special Funds				Total
			Title I Fund Code 305	IDEA Fund Code 240	Other ESE- Administered Grants	Other	ESE Admin- istered	Other	Circuit Breaker	Private Grants & Gifts	Sch Choice & Other Day Tuition	Other Local Receipts	
II GRANTS AND OTHER FUNDING SOURCES			305	240	Grants	Other	Admin- istered	Other	Circuit Breaker	Private Grants & Gifts	Sch Choice & Other Day Tuition	Other Local Receipts	Total
864	3629	Professional Salaries (01)	0	0	0	0	0	0	0	0	0	0	848,203
865	3630	Clerical Salaries (02)	0	0	0	0	0	0	0	0	0	0	361,820
866	3631	Other Salaries (03)	0	0	0	0	0	0	0	0	0	0	0
867	3632	Contracted Services (04)	0	0	0	0	0	0	0	0	0	0	74,105
868	3633	Supplies and Materials (05)	0	0	0	0	0	0	0	0	0	0	51,652
869	3634	Other Expenses (06)	0	0	0	0	0	0	0	0	0	0	6,577
870	3635	Sub-total	0	0	0	0	0	0	0	0	0	0	1,342,357
Administrative Technology and Support – Schools (2250)													
872	3644	Contracted Services (04)	0	0	0	0	0	0	0	0	0	0	0
873	3645	Supplies and Materials (05)	0	0	0	0	0	0	0	0	0	0	2,685
874	3646	Other Expenses (06)	0	0	0	0	0	0	0	0	0	0	0
875	3649	Sub-total	0	0	0	0	0	0	0	0	0	0	2,685
Teachers (2305)													
877	3650	Professional Salaries (01)	0	3,943	0	0	0	0	0	0	450,498	0	12,621,610
Medical/ Therapeutic Services (2320)													
879	3652	Professional Salaries (01)	0	0	0	0	0	0	0	0	0	0	601,795
880	3653	Clerical Salaries (02)	0	0	0	0	0	0	0	0	0	0	0
881	3654	Other Salaries (03)	0	0	0	0	0	0	0	0	0	0	0
882	3655	Contracted Services (04)	0	297	0	0	0	0	0	0	0	0	131,534
883 *	3656	Other Expenses (06)	0	0	0	0	0	0	0	0	0	0	0
884	3659	Sub-total	0	297	0	0	0	0	0	0	0	0	733,329

**SCHEDULE 3**  
**INSTRUCTIONAL EXPENDITURES**

8	9	10	11	12	13	14	15	16	17	18
Federal Grants				State Grants		Revolving and Special Funds				Total
Title I Fund Code 305	IDEA Fund Code 240	Other ESE- Administered Grants	Other	ESE Admin- istered	Other	Circuit Breaker	Private Grants & Gifts	Sch Choice & Other Day Tuition	Other Local Receipts	

**II GRANTS AND OTHER FUNDING SOURCES**

Line	Curriculum Directors and Department Heads (Supervisory) (2110)									
840	3601	Professional Salaries (01)	0	0	0	0	0	0	0	790,720
841	3602	Clerical Salaries (02)	0	28,000	0	0	0	0	0	192,361
842	3603	Other Salaries (03)	0	0	0	0	0	0	0	0
843	3604	Contracted Services (04)	0	0	0	0	0	0	0	15,881
844	3605	Supplies and Materials (05)	0	0	0	0	0	0	0	8,735
845	3606	Other Expenses (06)	0	0	0	0	0	0	0	842
846	3609	<b>Sub-total</b>	0	28,000	0	0	0	0	0	1,008,539
<b>Curriculum Directors and Department Heads (Non-Supervisory) (2120)</b>										
848	3611	Professional Salaries (01)	0	0	0	0	0	0	0	0
849	3612	Clerical Salaries (02)	0	0	0	0	0	0	0	0
850	3613	Other Salaries (03)	0	0	0	0	0	0	0	0
851	3614	Contracted Services (04)	0	0	0	0	0	0	0	0
852	3615	Supplies and Materials (05)	0	0	0	0	0	0	0	0
853	3616	Other Expenses (06)	0	0	0	0	0	0	0	0
854	3619	<b>Sub-total</b>	0	0	0	0	0	0	0	0
<b>Instructional Technology Leadership and Training (2130)</b>										
856	3621	Professional Salaries (01)	0	0	0	0	0	0	0	0
857	3622	Clerical Salaries (02)	0	0	0	0	0	0	0	0
858	3623	Other Salaries (03)	0	0	0	0	0	0	0	0
859	3624	Contracted Services (04)	0	0	0	0	0	0	0	0
860	3625	Supplies and Materials (05)	0	0	0	0	0	0	0	0
861	3626	Other Expenses (06)	0	0	0	0	0	0	0	0
862	3627	<b>Sub-total</b>	0	0	0	0	0	0	0	0

**SCHEDULE 3**  
**INSTRUCTIONAL EXPENDITURES**

1	2	3	4	5	6	7
REGULAR DAY	SPECIAL EDUCATION	CH 74 VOC- ATIONAL/ TECHNICAL	OTHER PROGRAMS	UNDISTRI- B- UTED	TOTAL	CITY/TOWN APPRO- PRIATION

**I. GENERAL FUND**

**Instructional Hardware –Student and Staff Devices (computers) (2451)**

792	3545	Contracted Services (04)	155,618	0	0	0	155,618	
793	3546	Supplies and Materials (05)	219,138	0	0	0	219,138	
794	3547	Other Expenses (06)	9,973	0	0	0	9,973	
795	3548	<b>Sub-total</b>	<b>384,729</b>	<b>0</b>	<b>0</b>	<b>0</b>	<b>384,729</b>	

**Instructional Hardware—All Other (2453)**

797	3549	Contracted Services (04)	0	0	0	0	0	
798	3550	Supplies and Materials (05)	4,029	0	0	0	4,029	
799	3551	Other Expenses (06)	0	0	0	0	0	
800	3552	<b>Sub-total</b>	<b>4,029</b>	<b>0</b>	<b>0</b>	<b>0</b>	<b>4,029</b>	

**Instructional Software and Other Instructional Materials (2455)**

802	3553	Contracted Services (04)	0	0	0	0	0	
803	3554	Supplies and Materials (05)	0	0	0	0	0	
804	3555	Other Expenses (06)	0	0	0	0	0	
805	3556	<b>Sub-total</b>	<b>0</b>	<b>0</b>	<b>0</b>	<b>0</b>	<b>0</b>	

**Guidance including Guidance Counselors and Adjustment Counselors (2710)**

807	3561	Professional Salaries (01)	817,087	0	0	0	817,087	
808	3562	Clerical Salaries (02)	40,328	0	0	0	40,328	
809	3563	Other Salaries (03)	0	0	0	0	0	
810	3564	Contracted Services (04)	5,896	0	0	0	5,896	
811	3565	Supplies and Materials (05)	2,097	0	0	0	2,097	
812	3566	Other Expenses (06)	0	0	0	0	0	
813	3569	<b>Sub-total</b>	<b>865,408</b>	<b>0</b>	<b>0</b>	<b>0</b>	<b>865,408</b>	

**Testing and Assessment (2720)**

815	3571	Professional Salaries (01)	0	0	0	0	0	
816	3572	Clerical Salaries (02)	0	0	0	0	0	
817	3573	Other Salaries (03)	0	0	0	0	0	
818	3574	Contracted Services (04)	1,274	0	0	0	1,274	
819	3575	Supplies and Materials (05)	0	0	0	0	0	
820	3576	Other Expenses (06)	0	0	0	0	0	
821	3579	<b>Sub-total</b>	<b>1,274</b>	<b>0</b>	<b>0</b>	<b>0</b>	<b>1,274</b>	

**Psychological Services (2800)**

823	3581	Professional Salaries (01)	0	253,393	0	0	253,393	
824	3582	Clerical Salaries (02)	0	0	0	0	0	
825	3583	Other Salaries (03)	0	0	0	0	0	
826	3584	Contracted Services (04)	0	0	0	0	0	
827	3585	Supplies and Materials (05)	0	8,107	0	0	8,107	
828	3586	Other Expenses (06)	0	0	0	0	0	
829	3589	<b>Sub-total</b>	<b>0</b>	<b>261,500</b>	<b>0</b>	<b>0</b>	<b>261,500</b>	
830	3599	<b>TOTAL INSTRUCTIONAL SERVICES (2000)</b>	<b>12,113,913</b>	<b>4,908,492</b>	<b>0</b>	<b>0</b>	<b>1,764,695</b>	<b>18,787,100</b>

**SCHEDULE 3**  
**INSTRUCTIONAL EXPENDITURES**

**1. GENERAL FUND**

	1	2	3	4	5	6	7
	REGULAR DAY	SPECIAL EDUCATION	CH 74 VOC- ATIONAL/ TECHNICAL	OTHER PROGRAMS	UNDISTRIB- UTED	TOTAL	CITY/TOWN APPRO- PRIATION
<b>Costs for Instructional Staff to Attend Professional Development (2356)</b>							
761	3501	Professional Salaries (01)	340	0	0	0	340
762	3502	Other Salaries (03)	12,709	6,259	0	0	18,968
763	3503	Supplies and Materials (05)	0	0	0	0	0
764	3504	Other Expenses (06)	54,250	11,576	0	0	65,828
765	3505	<i>Sub-total</i>	67,299	17,837	0	0	85,136
<b>Outside Professional Development Providers for Instructional Staff (2358)</b>							
767	3506	Contracted Services (04)	4,336	0	0	0	4,336
768	3507	Supplies and Materials (05)	0	0	0	0	0
769	3508	Other Expenses (06)	27,853	1,380	0	0	29,233
770	3509	<i>Sub-total</i>	32,189	1,380	0	0	33,569
<b>Textbooks (2410)</b>							
772	3511	Supplies and Materials (05)	7,122	0	0	0	7,122
<b>Other Instructional Materials (2415)</b>							
774	3514	Contracted Services (04)	1,500	0	0	0	1,500
775	3515	Supplies and Materials (05)	13,722	0	0	0	13,722
776	3516	Other Expenses (06)	0	0	0	0	0
777	3519	<i>Sub-total</i>	15,222	0	0	0	15,222
<b>Instructional Equipment (2420)</b>							
779	3524	Contracted Services (04)	0	0	0	0	0
780	3525	Supplies and Materials (05)	51,973	5,657	0	0	57,630
781	3526	Other Expenses (06)	88,223	5,022	0	0	93,245
782	3529	<i>Sub-total</i>	140,196	10,679	0	0	150,875
<b>General Supplies (2430)</b>							
784	3535	Supplies and Materials (05)	110,713	11,088	0	0	121,801
<b>Other Instructional Services (2440)</b>							
786	3540	Other Salaries (03)	0	0	0	0	0
787	3541	Contracted Services (04)	0	0	0	0	0
788	3542	Supplies and Materials (05)	0	0	0	0	0
789	3543	Other Expenses (06)	0	1,676	0	0	1,676
790	3544	<i>Sub-total</i>	0	1,676	0	0	1,676

**SCHEDULE 3**  
**INSTRUCTIONAL EXPENDITURES**

1	2	3	4	5	6	7
REGULAR DAY	SPECIAL EDUCATION	CH 74 VOC- ATTORNAU/ TECHNICAL	OTHER PROGRAMS	UNDISTRI- BUTED	TOTAL	CITY/TOWN APPRO- PRIATION

**I. GENERAL FUND**

**Librarians and Media Center Directors (2340)**

735	3476	Professional Salaries (01)				422,338	422,338	0
736	3477	Clerical Salaries (02)				0	0	0
737	3478	Other Salaries (03)				0	0	0
738	3479	<b>Sub-total</b>				422,338	422,338	0

**Distance Learning and Online Coursework (2345) (including Tuition for Dual Enrollment and SPED Transition Programs)**

740	3481	Contracted Services (04)	0	0	0	0	0	0
741	3482	Supplies and Materials (05)	0	0	0	0	0	0
742	3485	Other Expenses (06)	0	0	0	0	0	0
743	3486	<b>Sub-total</b>	0	0	0	0	0	0

**Professional Development Leadership (2351)**

745	3487	Professional Salaries (01)				0	0	0
746	3488	Clerical Salaries (02)				0	0	0
747	3489	Other Salaries (03)				0	0	0
748	3490	Contracted Services (04)				0	0	0
749	3491	Supplies and Materials (05)				0	0	0
750	3492	Other Expenses (06)				0	0	0
751	3493	<b>Sub-total</b>				0	0	0

**Instructional Coaches (2352)**

753	3494	Professional Salaries (01)	0	0	0	0	0	0
754	3495	Contracted Services (04)	0	0	0	0	0	0
755	3496	Supplies and Materials (05)	0	0	0	0	0	0
756	3497	Other Expenses (06)	12,887	0	0	0	12,887	
757	3498	<b>Sub-total</b>	12,887	0	0	0	12,887	

**Stipends for Teachers Providing Instructional Coaching (2354)**

759	3499	Professional Salaries (01)	0	0	0	0	0	0
-----	------	----------------------------	---	---	---	---	---	---

**SCHEDULE 3**  
**INSTRUCTIONAL EXPENDITURES**

**I. GENERAL FUND**

**Administrative Technology and Support – Schools (2250)**

1	2	3	4	5	6	7
REGULAR DAY	SPECIAL EDUCATION	CH 74 VOC- ATIONAL/ TECHNICAL	OTHER PROGRAMS	UNDISTRIB- UTED	TOTAL	CITY/TOWN APPRO- PRIATION

708	3444	Contracted Services (04)	0	0	0	0	
709	3445	Supplies and Materials (05)	0	2,685	0	2,685	
710	3446	Other Expenses (06)	0	0	0	0	
711	3449	Sub-total	0	2,685	0	2,685	

**Teachers (2305)**

713	3450	Professional Salaries (01)	9,651,868	2,515,301	0	0	12,167,169
-----	------	----------------------------	-----------	-----------	---	---	------------

**Medical/ Therapeutic Services (2320)**

715	3452	Professional Salaries (01)	0	601,795	0	0	601,795
716	3453	Clerical Salaries (02)	0	0	0	0	0
717	3454	Other Salaries (03)	0	0	0	0	0
718	3455	Contracted Services (04)	0	131,237	0	131,237	
719 *	3456	Other Expenses (06)	0	0	0	0	
720	3459	Sub-total	0	733,032	0	733,032	

**Substitutes, Long Term (2324)**

722	3462	Professional Salaries (01)	0	0	0	0	0
723	3463	Other Salaries (03)	16,591	0	0	16,591	
724	3464	Contracted Services (04)	0	0	0	0	
725	3465	Sub-total	16,591	0	0	16,591	

**Substitutes, Short Term (2325)**

727	3467	Other Salaries (03)	112,378	0	0	112,378	
728	3468	Contracted Services (04)	0	0	0	0	
729	3469	Sub-total	112,378	0	0	112,378	

**All Non-Clerical Paraprofessionals/Instructional Assistants (2330)**

731	3473	Other Salaries (03)	229,196	813,067	0	1,042,263	
732	3474	Contracted Services (04)	4,481	18,039	0	22,520	
733	3475	Sub-total	233,677	831,106	0	1,064,783	

**SCHEDULE 3**  
**INSTRUCTIONAL EXPENDITURES**

1	2	3	4	5	6	7
REGULAR DAY	SPECIAL EDUCATION	CH 74 VOC- ATIONAL/ TECHNICAL	OTHER PROGRAMS	UNDISTRI- B- UTED	TOTAL	CITY/TOWN APPRO- PRIATION

**I. GENERAL FUND**

**Curriculum Directors and Department Heads (Supervisory) (2110)**

676	3401	Professional Salaries (01)	400,196	390,524	0	0	790,720	
677	3402	Clerical Salaries (02)	53,834	110,527	0	0	164,361	
678	3403	Other Salaries (03)	0	0	0	0	0	
679	3404	Contracted Services (04)	0	15,881	0	0	15,881	
680	3405	Supplies and Materials (05)	4,177	4,558	0	0	8,735	
681	3406	Other Expenses (06)	124	718	0	0	842	
682	3409	<b>Sub-total</b>	<b>458,331</b>	<b>522,208</b>	<b>0</b>	<b>0</b>	<b>980,539</b>	

**Curriculum Directors and Department Heads (Non-Supervisory) (2120)**

684	3411	Professional Salaries (01)	0	0	0	0	0	
685	3412	Clerical Salaries (02)	0	0	0	0	0	
686	3413	Other Salaries (03)	0	0	0	0	0	
687	3414	Contracted Services (04)	0	0	0	0	0	
688	3415	Supplies and Materials (05)	0	0	0	0	0	
689	3416	Other Expenses (06)	0	0	0	0	0	
690	3419	<b>Sub-total</b>	<b>0</b>	<b>0</b>	<b>0</b>	<b>0</b>	<b>0</b>	

**Instructional Technology Leadership and Training (2130)**

692	3421	Professional Salaries (01)	0	0	0	0	0	
693	3422	Clerical Salaries (02)	0	0	0	0	0	
694	3423	Other Salaries (03)	0	0	0	0	0	
695	3424	Contracted Services (04)	0	0	0	0	0	
696	3425	Supplies and Materials (05)	0	0	0	0	0	
697	3426	Other Expenses (06)	0	0	0	0	0	
698	3427	<b>Sub-total</b>	<b>0</b>	<b>0</b>	<b>0</b>	<b>0</b>	<b>0</b>	

**School Leadership-Building (2210)**

700	3428	Professional Salaries (01)				848,203	848,203	
701	3429	Clerical Salaries (02)				361,820	361,820	
702	3430	Other Salaries (03)				0	0	
703	3431	Contracted Services (04)				74,105	74,105	
704	3432	Supplies and Materials (05)				51,652	51,652	
705	3433	Other Expenses (06)				6,577	6,577	
706	3434	<b>Sub-total</b>				<b>1,342,357</b>	<b>1,342,357</b>	

**SCHEDULE 2**

**FY20 ASSESSMENTS RECEIVED FROM MEMBER  
TOWNS OR CITIES OF REGIONAL SCHOOL DISTRICTS**

1	2	3	4	5	6
MEMBER CITY/TOWN CODE	MINIMUM LOCAL CON- TRIBUTION	ADDITIONAL LOCAL CON- TRIBUTION	TRANSP & OTHER EX- PENDITURES	CAPITAL & DEBT EX- PENDITURES	TOTAL

Please mark  
with an "X"  
assessment  
method used  
for FY20

MEMBER CITY/TOWN NAME								
640	3100	HAMILTON	119	18,686,426			255,157	18,941,583
641	3110	WENHAM	320	10,488,321			141,664	10,629,985
642	3120							0
643	3130							0
644	3140							0
645	3150							0
646	3160							0
647	3170							0
648	3180							0
649	3190							0
650	3200							0
651	3210							0
652	3220							0
653	3230							0
654	3240							0
655	3250							0
656	3260							0
657	3270							0
658	3280							0
659	3290							0
660	3300							0
661	3310							0
662	3320							0
663	3330							0
664	3340							0
665	3350							0
666	3360							0
667	3370	TOTAL ASSESSMENTS RECEIVED FROM MEMBERS		29,174,747	0	0	396,821	29,571,568

(C

statutory

alternative

Difference

from Sched 1

0

(Check only on

statutory ☐

alternative ☒

Difference  
from Sched 1



SCHEDULE 1

REVENUE AND EXPENDITURE SUMMARY

C.2. EXPENDITURES FROM FEDERAL

GRANTS, STATE GRANTS AND

SPECIAL FUNDS

1	2	3	4	5	6	7	8	9	10	11	12	13	
Federal Grants				State Grants		Revolving and Special Funds							Total
Title I FC 305	IDEA FC 240	Other ESE Admin- Istered	Other	ESE Admin- Istered	Other	Circuit Breaker	Private Grants & Gifts	Sch Choice & Other Day Tuition	Athletic Fund	School Lunch	Other Local Receipts		
												0	
												0	
							17,753					17,753	
												0	
												0	
												0	
												0	
												0	
												0	
												0	
												0	
												0	
												0	
												0	
												0	
												0	
												0	
												0	
												0	
												0	
												0	
												0	
												0	
												0	
												0	
												0	
												0	
												0	
												0	
												0	
												0	
												0	
												0	
												0	
												0	
												0	
												0	
												0	
												0	
												0	
												0	
												0	
												0	
												0	
												0	
												0	
												0	
												0	
												0	
												0	
												0	
												0	
												0	
												0	
												0	
												0	
												0	
												0	
												0	
												0	
												0	
												0	
												0	
												0	
												0	
												0	
												0	
												0	
												0	
												0	
												0	
												0	
												0	
												0	
												0	
												0	
												0	
												0	
												0	
												0	
												0	
												0	
												0	
												0	
												0	
												0	
												0	
												0	
												0	
												0	
												0	
												0	
												0</	

**SCHEDULE 1**  
**REVENUE AND EXPENDITURE SUMMARY**  
**C.2. EXPENDITURES FROM FEDERAL**  
**GRANTS, STATE GRANTS AND**  
**SPECIAL FUNDS**

1	2	3	4	5	6	7	8	9	10	11	12	13
Federal Grants				State Grants		Revolving and Special Funds						
Title I FC 305	IDEA FC 240	Other ESE Admin- Istered	Other	ESE Admin- Istered	Other	Circuit Breaker	Private Grants & Gifts	Sch Choice & Other Day Tuition	Athletic Fund	School Lunch	Other Local Receipts	Total
2910	Attendance and Parent Liaison Services (3100)				47,886							47,886
2920	Medical/Health Services (3200)											0
2930	Transportation Services (3300)											0
2940	Food Services (3400)									392,012		392,012
2950	Athletics (3510)								184,289		15,215	199,504
2960	Other Student Body Activities (3520)				2,400		7,558				41,927	51,885
2965	School Security (3600)											0
2971	Custodial Services (4110)										12,132	12,132
2972	Heating of Buildings (4120)											0
2973	Utility Services (4130)				652					652		1,304
2974	Maintenance of Grounds (4210)											0
2975	Maintenance of Buildings (4220)										372	372
2976	Building Security System (4225)											0
2977	Maintenance of Equipment (4230)											0
2980	Extraordinary Maintenance (4300)											0
2982	Technology Infrastructure, Maintenance, and Support—Salaries (4400)				902							902
2984	Technology Infrastructure, Maintenance, and Support—All Other (4450)											0
2991	Employer Retirement Contributions (5100)	5,330			391							5,721
2992	Employee Separation Costs (5150)											0
2993	Insurance for Active Employees (5200)											0
2994	Insurance for Retired School Employees (5250)											0
2995	Other Non-Employee Insurance (5260)										17,392	17,392
3012	Rental Lease of Equipment (5300)											0
3014	Rental Lease of Buildings (5350)				6,750							6,750
3022	Short Term Interest RAN's (5400)											0
3024	Short Term Interest BAN'S (5450)											0
3026	Other Fixed Charges (5500)											0
3028	School Crossing Guards (5550)											0
3030	Indirect Cost Transfers											0
3042	Civic Activities And Community Services (6200)											0
3044	Recreation Services (6300)											0

**SCHEDULE 1**  
**REVENUE AND EXPENDITURE SUMMARY**  
**C.2. EXPENDITURES FROM FEDERAL**  
**GRANTS, STATE GRANTS AND**  
**SPECIAL FUNDS**

1	2	3	4	5	6	7	8	9	10	11	12	13
Federal Grants				State Grants		Revolving and Special Funds						
Title I FC 305	IDEA FC 240	Other ESE Admin- istered	Other	ESE Admin- istered	Other	Circuit Breaker	Private Grants & Gifts	Sch Choice & Other Day Tuition	Athletic Fund	School Lunch	Other Local Receipts	Total
2801	School Committee (1110)											0
2802	Superintendent (1210)											0
2803	Assistant Superintendents (1220)											0
2804	Other District-Wide Administration (1230)											0
2805	Business and Finance (1410)											0
2806	Human Resources and Benefits (1420)											0
2807	Legal Service For School Committee (1430)											0
2808	Legal Settlements (1435)											0
2809	Administrative Technology-Districtwide (1450)											0
<b>Instruction</b>												
2810	Curriculum Directors and Dept. Heads (Supervisory) (2110)	0	28,000	0	0	0	0	0	0		0	28,000
2811	Curriculum Directors and Dept. Heads (Non-Supervisory) (2120)	0	0	0	0	0	0	0	0		0	0
2812	Instructional Technology Leadership and Training (2130)	0	0	0	0	0	0	0	0		0	0
2814	School Leadership-Building (2210)	0	0	0	0	0	0	0	0		0	0
2815	Administrative Technology and Support – Schools (2250)	0	0	0	0	0	0	0	0		0	0
2816	Teachers, Classroom (2305)	0	3,943	0	0	0	0	450,498			0	454,441
2817	Medical/Therapeutic Services (2320)	0	297	0	0	0	0	0			0	297
2818	Substitutes, Long Term (2324)	0	0	0	0	0	0	0			0	0
2819	Substitutes, Short Term (2325)	0	0	0	0	0	0	0			0	0
2820	Non-Clerical Paraprofs/Instructional Assistants (2330)	53,998	406,861	0	13,465	0	0	0			0	474,324
2821	Librarians and Media Center Directors (2340)	0	0	0	0	0	0	0			880	880
2822	Distance Learning and Online Coursework (2345) (Including Tuitio	0	0	0	0	0	0	0			0	0
2823	Professional Development Leadership (2351)	0	0	0	0	0	0	0			0	0
2824	Instructional Coaches (2352)	0	0	0	0	0	0	0			0	0
2825	Stipends for Teachers Providing Instructional Coaching (2354)	0	0	0	0	0	0	0			0	0
2826	Costs for Instructional Staff to Attend Prof. Development (2356)	0	275	3,443	0	0	0	540			0	4,258
2827	Outside Professional Development for Instructional Staff (2358)	850	0	33,172	0	0	0	0			0	34,022
2828	Textbooks (2410)	0	0	0	0	0	69	0	58		0	127
2829	Other Instructional Materials (2415)	0	0	0	0	0	0	0	0		0	0
2830	Instructional Equipment (2420)	0	0	0	0	0	998	0	33,199	6,444	0	40,641
2831	General Supplies (2430)	0	0	0	0	0	2,796	0	3,049		11,425	17,270
2832	Other Instructional Services (2440)	48,247	10,186	0	0	0	10,732	0	1,583	0	0	70,748
2833	Instructional Hardware –Student and Staff Devices (computers) (2	0	0	0	0	0	0	0	0		72,843	72,843
2834	Instructional Hardware—All Other (2453)	0	0	0	0	0	0	0	0		0	0
2835	Instructional Software and Other Instructional Materials (2455)	7,650	0	0	0	0	0	13,691	0		0	21,341
2836	Guidance Counselors and Adjustment Counselors (2710)	0	0	0	0	0	0	0	0		25,895	25,895
2900	Testing and Assessment (2720)	0	0	0	0	0	0	0	0		15	15
2901	Psychological Services (2800)	0	0	0	0	0	0	0	0		0	0
2902	<b>TOTAL INSTRUCTION (2000)</b>	<b>110,745</b>	<b>449,562</b>	<b>36,615</b>	<b>13,465</b>	<b>0</b>	<b>14,595</b>	<b>0</b>	<b>49,071</b>	<b>459,991</b>	<b>111,058</b>	<b>1,245,102</b>

**SCHEDULE 1**  
**REVENUE AND EXPENDITURE SUMMARY**

**II. EXPENDITURES**  
**B. BY CITY OR TOWN**

1	2	3	4	5	6
REGULAR DAY	SPECIAL EDUCATION	CH 74 VOC- ATIONAL/ TECHNICAL	OTHER PROGRAMS	UNDISTRIB- UTED	TOTAL
<b>Payments to Other Districts (9000)</b>					
2210 Tuition to Mass. Public Schools (9100)	0				0
2220 School Choice Tuition (9110)	0	0			0
2230 Tuition to Commonwealth Charter Schools (9120)	0	0			0
2235 Tuition to Horace Mann Charter Schools (9125)					0
2236 Charter Transportation Tuition (9130)				0	0
2240 Tuition to Out-of-State Schools (9200)					0
2250 Tuition to Non-Public Schools (9300)					0
2260 Tuition to Collaboratives (9400)					0
2270 Regional School Assessment (9500)					0
2280 <i>Sub-total</i>	0	0	0	0	0
2290 <b>TOTAL EXPENDITURES BY CITY OR TOWN</b>	0	0	0	0	0

**SCHEDULE 1**  
**REVENUE AND EXPENDITURE SUMMARY**

**II. EXPENDITURES**

**B. BY CITY OR TOWN**

		1	2	3	4	5	6
		REGULAR DAY	SPECIAL EDUCATION	CH 74 VOC- ATIONAL/ TECHNICAL	OTHER PROGRAMS	UNDISTRIB- UTED	TOTAL
480	1900 School Committee (1110)						0
481	1910 Business and Finance (1410)						0
482	1912 Human Resources and Benefits (1420)						0
483	1914 Legal Services for School Committee (1430)						0
484	1916 Legal Settlements (1435)						0
485	1920 Administrative Technology—Districtwide (1450)						0
486	1930 Librarians and Media Center Directors (2340)					0	0
487	1935 Other Instructional Materials (2415)					0	0
488	1940 Health Services (3200)						0
489	1950 <del>Pupil Transportation (3300)</del>						0
490	1960 School Security (3600)						0
491	1970 School Custodial Services (4110)						0
492	1972 Heating of School Buildings (4120)						0
493	1974 School Utility Services (4130)						0
494	1975 Maintenance of School Grounds (4210)						0
495	1976 Maintenance of School Buildings (4220)						0
496	1978 School Building Security System (4225)						0
497	1979 Maintenance of School Equipment (4230)						0
498	1990 Extraordinary Maintenance (4300)						0
499	1995 Technology Infrastructure, Maintenance, and Support—Salaries (4400)						0
500	1996 Technology Infrastructure, Maintenance, and Support—All Other (4450)						0
501	2000 Employer Retirement Contributions (5100)						0
<b>Employee Separation Costs (5150)</b>							
503	2003 Professional Salaries (01)						0
504	2004 Clerical Salaries (02)						0
505	2005 Other Salaries (03)						0
506	2006 Contracted Services (04)						0
507	2007 <b>Sub-total</b>					0	0
508	2010 Insurance For Active Employees (5200)						0
509	2020 Insurance For Retired School Employees (5250)						0
510	2030 Other Non-Employee Insurance (5260)						0
511	2040 Rental-Lease Equipment (5300)						0
512	2050 Rental-Lease Buildings (5350)						0
513	2060 Short-Term Interest RAN's (5400)						0
514	2065 <del>Short-Term Interest - RAN's (5450)</del>						0
515	2070 <del>Other Fixed Charges (5400)</del>						0
516	2075 <del>School Crossing Guards (5550)</del>						0
517	2080 <del>Health Non-Public Schools (5800)</del>						0
518	2090 <del>Transportation Non-Public Schools (6900)</del>						0
519	2100 <del>Purchase of Land &amp; Buildings (7100, 7200)</del>						0
520	2110 <del>Equipment (7300, 7400)</del>						0
521	2115 <del>Capital Technology (7350)</del>						0
522	2120 <del>Motor Vehicles (7500, 7600)</del>						0
523	2130 <del>Long-Term Debt Retire/Sch Construction (8100)</del>						0
524	2140 <del>Long-Term Debt Service/Sch Construction (8200)</del>						0
525	2200 <del>Long-Term Debt Service/Educ &amp; Other (8400, 8500)</del>						0

**SCHEDULE 1**  
**REVENUE AND EXPENDITURE SUMMARY**

**II. EXPENDITURES**

**A. BY SCHOOL COMMITTEE**

1	2	3	4	5	6
REGULAR DAY	SPECIAL EDUCATION	CH 74 VOC- ATIONAL/ TECHNICAL	OTHER PROGRAMS	UNDISTRI- BUTED	TOTAL

**Health Non-Public Schools (6800)**

436	1721	Professional Salaries (01)					0
437	1722	Clerical Salaries (02)					0
438	1723	Other Salaries (03)					0
439	1724	Contracted Services (04)					0
440	1725	Supplies and Materials (05)					0
441	1726	Other Expenses (06)					0
442	1729	Sub-total	0	0	0	0	0

**Transportation Non-Public (6900)**

444	1731	Professional Salaries (01)					0
445	1732	Clerical Salaries (02)					0
446	1733	Other Salaries (03)					0
447	1734	Contracted Services (04)					0
448	1735	Supplies and Materials (05)					0
449	1736	Other Expenses (06)					0
450	1739	Sub-total	0	0	0	0	0

**Asset Acquisition & Improvement (7000)**

452	1741	Purchase of Land & Buildings (7100, 7200)				125,000	125,000
453	1742	Equipment (7300, 7400)					0
454	1743	Capital Technology (7350)					0
455	1744	Motor Vehicles (7500, 7600)					0
456	1749	Sub-total				125,000	125,000

**Long Term Debt (8000)**

458	1751	Debt Retirement/Sch Construction (8100)				185,000	185,000
459	1752	Debt Service/Sch Construction (8200)				62,950	62,950
460	1753	Debt Service/Educ. & Other (8400, 8600)					0
461	1759	Sub-total				247,950	247,950

**Payments to Other Districts (9000)**

463	1770	Tuition to Mass. Public Schools (9100)		201,278			201,278
464	1780	School Choice Tuition (9110)	107,612	27,562	0		135,174
465	1790	Tuition to Commonwealth Charter Schools (9120)	0	0			0
466	1795	Tuition to Horace Mann Charter Schools (9125)					0
467	1796	Charter Transportation Tuition (9130)				0	0
468	1800	Tuition to Out-of-State Schools (9200)		382,341			382,341
469	1810	Tuition to Non-Public Schools (9300)		1,752,657			1,752,657
470	1820	Tuition to Collaboratives (9400)		486,864			486,864
471	1840	Sub-total	107,612	2,850,702	0	0	2,958,314
472	1850	TOTAL EXPENDITURES BY SCHOOL COMMITTEE	13,021,327	8,418,090	0	0	11,295,443

**SCHEDULE 1**  
**REVENUE AND EXPENDITURE SUMMARY**

**II. EXPENDITURES**

**A. BY SCHOOL COMMITTEE**

1	2	3	4	5	6
REGULAR DAY	SPECIAL EDUCATION	CH 74 VOC- ATIONAL/ TECHNICAL	OTHER PROGRAMS	UNDISTRIB- UTED	TOTAL

**Technology Infrastructure, Maintenance, and Support—All Other (4450)**

394	1654	Contracted Services (04)				89,893	89,893
395	1655	Supplies and Materials (05)					0
396	1656	Other Expenses (06)					0
397	1659	<b>Sub-total</b>				89,893	89,893

**Employer Retirement Contributions (5100)**

399	1661	Employer Retirement Contributions (5100)				1,363,207	1,363,207
-----	------	--	--	--	--	-----------	-----------

**Employee Separation Costs (5150)**

401	1664	Professional Salaries (01)				26,028	26,028
402	1665	Clerical Salaries (02)					0
403	1666	Other Salaries (03)					0
404	1667	Contracted Services (04)				52,648	52,648
405	1669	<b>Sub-total</b>				78,676	78,676

**Insurance (5200)**

407	1672	Insurance for Active Employees (5200)				2,261,934	2,261,934
408	1673	Insurance for Retired School Employees (5250)				742,354	742,354
409	1674	Other Non Employee Insurance (5260)				84,867	84,867
410	1679	<b>Sub-total</b>				3,089,155	3,089,155

**Rental Lease, Interest & Other Fixed Charges (5300, 5400, 5500, 5550)**

412	1681	Rental-Lease Equipment (5300)				15,669	15,669
413	1682	Rental-Lease Buildings (5350)					0
414	1683	Short-Term Interest RAN's (5400)					0
415	1684	Short-Term Interest BAN's (5450)				23,310	23,310
416	1685	Other Fixed Charges (5500)				13,773	13,773
417	1686	School Crossing Guards (5550)					0
418	1689	<b>Sub-total</b>				52,752	52,752

**Civic Activities and Community Services (6200)**

420	1701	Professional Salaries (01)					0
421	1702	Clerical Salaries (02)					0
422	1703	Other Salaries (03)					0
423	1704	Contracted Services (04)					0
424	1705	Supplies and Materials (05)					0
425	1706	Other Expenses (06)					0
426	1709	<b>Sub-total</b>	0	0	0	0	0

**Recreation (6300)**

428	1711	Professional Salaries (01)					0
429	1712	Clerical Salaries (02)					0
430	1713	Other Salaries (03)					0
431	1714	Contracted Services (04)					0
432	1715	Supplies and Materials (05)					0
433	1716	Other Expenses (06)					0
434	1719	<b>Sub-total</b>				0	0

**SCHEDULE 1  
REVENUE AND EXPENDITURE SUMMARY**

**II. EXPENDITURES  
A. BY SCHOOL COMMITTEE**

1	2	3	4	5	6
REGULAR DAY	SPECIAL EDUCATION	CH 74 VOC- ATIONAL/ TECHNICAL	OTHER PROGRAMS	UNDISTRIB- UTED	TOTAL

**Building Security System (4225)**

371	1614	Contracted Services (04)				0
372	1615	Supplies and Materials (05)				0
373	1616	Other Expenses (06)				0
374	1619	<i>Sub-total</i>			0	0

**Maintenance of Equipment (4230)**

376	1621	Professional Salaries (01)				0
377	1622	Clerical Salaries (02)				0
378	1623	Other Salaries (03)				0
379	1624	Contracted Services (04)				0
380	1625	Supplies and Materials (05)				0
381	1626	Other Expenses (06)				0
382	1629	<i>Sub-total</i>			0	0

**Extraordinary Maintenance (4300)**

384	1634	Contracted Services (04)				0
385	1635	Supplies and Materials (05)				0
386	1636	Other Expenses (06)				0
387	1639	<i>Sub-total</i>			0	0

**Technology Infrastructure, Maintenance, and Support-Salaries (4400)**

389	1641	Professional Salaries (01)				131,133	131,133
390	1642	Clerical Salaries (02)				0	0
391	1643	Other Salaries (03)				300,217	300,217
392	1649	<i>Sub-total</i>				431,350	431,350



**SCHEDULE 1**  
**REVENUE AND EXPENDITURE SUMMARY**

**II. EXPENDITURES**

**A. BY SCHOOL COMMITTEE**

1	2	3	4	5	6
REGULAR DAY	SPECIAL EDUCATION	CH 74 VOC- ATIONAL/ TECHNICAL	OTHER PROGRAMS	UNDISTRIB- UTED	TOTAL

**Heating of Buildings (4120)**

345	1574	Contracted Services (04)					0
346	1575	Supplies and Materials (05)					0
347	1576	Other Expenses (06)				187,630	187,630
348	1579	<i>Sub-total</i>				187,630	187,630

**Utility Services (4130)**

350	1584	Contracted Services (04)					0
351	1585	Supplies and Materials (05)					0
352	1586	Other Expenses (06)				354,134	354,134
353	1589	<i>Sub-total</i>				354,134	354,134

**Maintenance of Grounds (4210)**

355	1591	Professional Salaries (01)					0
356	1592	Clerical Salaries (02)					0
357	1593	Other Salaries (03)					0
358	1594	Contracted Services (04)					0
359	1595	Supplies and Materials (05)					0
360	1596	Other Expenses (06)					0
361	1599	<i>Sub-total</i>				0	0

**Maintenance of Buildings (4220)**

363	1601	Professional Salaries (01)					0
364	1602	Clerical Salaries (02)					0
365	1603	Other Salaries (03)				148,936	148,936
366	1604	Contracted Services (04)				408,315	408,315
367	1605	Supplies and Materials (05)				3,861	3,861
368	1606	Other Expenses (06)					0
369	1609	<i>Sub-total</i>				561,112	561,112

**SCHEDULE 1**

**REVENUE AND EXPENDITURE SUMMARY**

**II. EXPENDITURES**

**A. BY SCHOOL COMMITTEE**

1	2	3	4	5	6
REGULAR DAY	SPECIAL EDUCATION	CH 74 VOC- ATIONAL/ TECHNICAL	OTHER PROGRAMS	INDUSTRIAL RELATED	TOTAL

**Athletics (3510)**

313	1501	Professional Salaries (01)				102,612	102,612
314	1502	Clerical Salaries (02)				30,727	30,727
315	1503	Other Salaries (03)				60	60
316	1504	Contracted Services (04)				61,353	61,353
317	1505	Supplies and Materials (05)				1,354	1,354
318	1506	Other Expenses (06)				228,363	228,363
319	1509	<b>Sub-total</b>				424,499	424,499

**Other Student Activities (3520)**

321	1521	Professional Salaries (01)				87,005	87,005
322	1522	Clerical Salaries (02)					0
323	1523	Other Salaries (03)					0
324	1524	Contracted Services (04)					0
325	1525	Supplies and Materials (05)					0
326	1526	Other Expenses (06)					0
327	1529	<b>Sub-total</b>				87,005	87,005

**School Security (3500)**

329	1541	Professional Salaries (01)					0
330	1542	Clerical Salaries (02)					0
331	1543	Other Salaries (03)					0
332	1544	Contracted Services (04)					0
333	1545	Supplies and Materials (05)					0
334	1546	Other Expenses (06)					0
335	1549	<b>Sub-total</b>				0	0

**Custodial Services (4110)**

337	1551	Professional Salaries (01)				105,329	105,329
338	1552	Clerical Salaries (02)				28,721	28,721
339	1553	Other Salaries (03)				746,564	746,564
340	1554	Contracted Services (04)					0
341	1555	Supplies and Materials (05)				81,129	81,129
342	1556	Other Expenses (06)				7,308	7,308
343	1569	<b>Sub-total</b>				969,051	969,051

SCHEDULE 1

REVENUE AND EXPENDITURE SUMMARY

II. EXPENDITURES

A. BY SCHOOL COMMITTEE

1	2	3	4	5	6
REGULAR DAY	SPECIAL EDUCATION	CH 74 VOC- ATIONAL/ TECHNICAL	OTHER PROGRAMS	UNDISTRIB- UTED	TOTAL

Medical/Health Services (3200)

289	1441	Professional Salaries (01)				340,700	340,700
290	1442	Clerical Salaries (02)					0
291	1443	Other Salaries (03)					0
292	1444	Contracted Services (04)				1,815	1,815
293	1445	Supplies and Materials (05)				50,356	50,356
294	1446	Other Expenses (06)				1,273	1,273
295	1449	Sub-total				394,144	394,144

Transportation Services (3300)

297	1461	Professional Salaries (01)	5,330				5,330
298	1462	Clerical Salaries (02)					0
299	1463	Other Salaries (03)					0
300	1464	Contracted Services (04)	794,472	609,693			1,404,165
301	1465	Supplies and Materials (05)					0
302	1466	Other Expenses (06)					0
303	1469	Sub-total	799,802	609,693	0	0	1,409,495

Food Services (3400)

305	1481	Professional Salaries (01)					0
306	1482	Clerical Salaries (02)					0
307	1483	Other Salaries (03)				158,279	158,279
308	1484	Contracted Services (04)					0
309	1485	Supplies and Materials (05)					0
310	1486	Other Expenses (06)					0
311	1489	Total				158,279	158,279

SCHEDULE 1

REVENUE AND EXPENDITURE SUMMARY

II. EXPENDITURES

A. BY SCHCCL COMMITTEE

1	2	3	4	5	6
REGULAR DAY	SPECIAL EDUCATION	CH 74 VOC- ATIONAL/ TECHNICAL	OTHER PROGRAMS	UNDISTRIB- UTED	TOTAL

Testing and Assessment (2720)

265	1381	Professional Salaries (01)	0	0	0	0	0
266	1382	Clerical Salaries (02)	0	0	0	0	0
267	1383	Other Salaries (03)	0	0	0	0	0
268	1384	Contracted Services (04)	1,274	0	0	0	1,274
269	1385	Supplies and Materials (05)	0	0	0	0	0
270	1386	Other Expenses (06)	0	0	0	0	0
271	1389	<b>Sub-total</b>	1,274	0	0	0	1,274

Psychological Services (2800)

273	1401	Professional Salaries (01)	0	253,393	0	0	253,393
274	1402	Clerical Salaries (02)	0	0	0	0	0
275	1403	Other Salaries (03)	0	0	0	0	0
276	1404	Contracted Services (04)	0	0	0	0	0
277	1405	Supplies and Materials (05)	0	8,107	0	0	8,107
278	1406	Other Expenses (06)	0	0	0	0	0
279	1409	<b>Sub-total</b>	0	261,500	0	0	261,500

Attendance and Parent Liaison Services (3100)

281	1421	Professional Salaries (01)					0
282	1422	Clerical Salaries (02)					0
283	1423	Other Salaries (03)					0
284	1424	Contracted Services (04)					0
285	1425	Supplies and Materials (05)					0
286	1426	Other Expenses (06)					0
287	1429	<b>Sub-total</b>				0	0

**SCHEDULE 1**

**REVENUE AND EXPENDITURE SUMMARY**

**II. EXPENDITURES**

**A. BY SCHOOL COMMITTEE**

1	2	3	4	5	6
REGULAR DAY	SPECIAL EDUCATION	CH 74 VCC- ATIONAL/ TECHNICAL	OTHER PROGRAMS	UNDISTRIB- UTED	TOTAL

**Instructional Hardware—Student and Staff Devices (computers) (2451)**

242	1304	Contracted Services (04)	155,618	0	0	0	155,618
243	1305	Supplies and Materials (05)	219,138	0	0	0	219,138
244	1306	Other Expenses (06)	9,973	0	0	0	9,973
245	1309	<b>Sub-total</b>	<b>384,729</b>	<b>0</b>	<b>0</b>	<b>0</b>	<b>384,729</b>

**Instructional Hardware—All Other (2453)**

247	1324	Contracted Services (04)	0	0	0	0	0
248	1325	Supplies and Materials (05)	4,029	0	0	0	4,029
249	1326	Other Expenses (06)	0	0	0	0	0
250	1329	<b>Sub-total</b>	<b>4,029</b>	<b>0</b>	<b>0</b>	<b>0</b>	<b>4,029</b>

**Instructional Software and Other Instructional Materials (2455)**

252	1344	Contracted Services (04)	0	0	0	0	0
253	1345	Supplies and Materials (05)	0	0	0	0	0
254	1346	Other Expenses (05)	0	0	0	0	0
255	1349	<b>Sub-total</b>	<b>0</b>	<b>0</b>	<b>0</b>	<b>0</b>	<b>0</b>

**Guidance including Guidance Counselors and Adjustment Counselors (2710)**

257	1361	Professional Salaries (01)	817,087	0	0	0	817,087
258	1362	Clerical Salaries (02)	40,328	0	0	0	40,328
259	1363	Other Salaries (03)	0	0	0	0	0
260	1364	Contracted Services (04)	5,896	0	0	0	5,896
261	1365	Supplies and Materials (05)	2,097	0	0	0	2,097
262	1366	Other Expenses (06)	0	0	0	0	0
263	1369	<b>Sub-total</b>	<b>865,408</b>	<b>0</b>	<b>0</b>	<b>0</b>	<b>865,408</b>

1. Name of the person or organization  
 2. Address  
 3. City  
 4. State  
 5. Zip  
 6. Date  
 7. Signature  
 8. Title  
 9. Organization  
 10. Address  
 11. City  
 12. State  
 13. Zip  
 14. Date  
 15. Signature  
 16. Title  
 17. Organization

18. Name of the person or organization  
 19. Address  
 20. City  
 21. State  
 22. Zip  
 23. Date  
 24. Signature  
 25. Title  
 26. Organization

27. Name of the person or organization  
 28. Address  
 29. City  
 30. State  
 31. Zip  
 32. Date  
 33. Signature  
 34. Title  
 35. Organization

36. Name of the person or organization  
 37. Address  
 38. City  
 39. State  
 40. Zip  
 41. Date  
 42. Signature  
 43. Title  
 44. Organization

45. Name of the person or organization  
 46. Address  
 47. City  
 48. State  
 49. Zip  
 50. Date  
 51. Signature  
 52. Title  
 53. Organization

54. Name of the person or organization  
 55. Address  
 56. City  
 57. State  
 58. Zip  
 59. Date  
 60. Signature  
 61. Title  
 62. Organization

63. Name of the person or organization  
 64. Address  
 65. City  
 66. State  
 67. Zip  
 68. Date  
 69. Signature  
 70. Title  
 71. Organization

72. Name of the person or organization  
 73. Address  
 74. City  
 75. State  
 76. Zip  
 77. Date  
 78. Signature  
 79. Title  
 80. Organization

81. Name of the person or organization  
 82. Address  
 83. City  
 84. State  
 85. Zip  
 86. Date  
 87. Signature  
 88. Title  
 89. Organization

90. Name of the person or organization  
 91. Address  
 92. City  
 93. State  
 94. Zip  
 95. Date  
 96. Signature  
 97. Title  
 98. Organization

99. Name of the person or organization  
 100. Address  
 101. City  
 102. State  
 103. Zip  
 104. Date  
 105. Signature  
 106. Title  
 107. Organization

108. Name of the person or organization  
 109. Address  
 110. City  
 111. State  
 112. Zip  
 113. Date  
 114. Signature  
 115. Title  
 116. Organization

117. Name of the person or organization  
 118. Address  
 119. City  
 120. State  
 121. Zip  
 122. Date  
 123. Signature  
 124. Title  
 125. Organization

126. Name of the person or organization  
 127. Address  
 128. City  
 129. State  
 130. Zip  
 131. Date  
 132. Signature  
 133. Title  
 134. Organization

135. Name of the person or organization  
 136. Address  
 137. City  
 138. State  
 139. Zip  
 140. Date  
 141. Signature  
 142. Title  
 143. Organization

144. Name of the person or organization  
 145. Address  
 146. City  
 147. State  
 148. Zip  
 149. Date  
 150. Signature  
 151. Title  
 152. Organization

153. Name of the person or organization  
 154. Address  
 155. City  
 156. State  
 157. Zip  
 158. Date  
 159. Signature  
 160. Title  
 161. Organization

162. Name of the person or organization  
 163. Address  
 164. City  
 165. State  
 166. Zip  
 167. Date  
 168. Signature  
 169. Title  
 170. Organization

171. Name of the person or organization  
 172. Address  
 173. City  
 174. State  
 175. Zip  
 176. Date  
 177. Signature  
 178. Title  
 179. Organization

180. Name of the person or organization  
 181. Address  
 182. City  
 183. State  
 184. Zip  
 185. Date  
 186. Signature  
 187. Title  
 188. Organization

189. Name of the person or organization  
 190. Address  
 191. City  
 192. State  
 193. Zip  
 194. Date  
 195. Signature  
 196. Title  
 197. Organization

198. Name of the person or organization  
 199. Address  
 200. City  
 201. State  
 202. Zip  
 203. Date  
 204. Signature  
 205. Title  
 206. Organization

207. Name of the person or organization  
 208. Address  
 209. City  
 210. State  
 211. Zip  
 212. Date  
 213. Signature  
 214. Title  
 215. Organization

216. Name of the person or organization  
 217. Address  
 218. City  
 219. State  
 220. Zip  
 221. Date  
 222. Signature  
 223. Title  
 224. Organization

225. Name of the person or organization  
 226. Address  
 227. City  
 228. State  
 229. Zip  
 230. Date  
 231. Signature  
 232. Title  
 233. Organization

234. Name of the person or organization  
 235. Address  
 236. City  
 237. State  
 238. Zip  
 239. Date  
 240. Signature  
 241. Title  
 242. Organization

243. Name of the person or organization  
 244. Address  
 245. City  
 246. State  
 247. Zip  
 248. Date  
 249. Signature  
 250. Title  
 251. Organization

252. Name of the person or organization  
 253. Address  
 254. City  
 255. State  
 256. Zip  
 257. Date  
 258. Signature  
 259. Title  
 260. Organization

SCHEDULE 1

REVENUE AND EXPENDITURE SUMMARY

II. EXPENDITURES

A. BY SCHOOL COMMITTEE

1	2	3	4	5	6
REGULAR DAY	SPECIAL EDUCATION	CH 74 VOC- ATIONAL/ TECHNICAL	OTHER PROGRAMS	UNDISTRI- BUTED	TOTAL

Outside Professional Development for instructional Staff (2358)

217	1194	Contracted Services (04)	4,336	0	0	0	4,336
218	1195	Supplies and Materials (05)	0	0	0	0	0
219	1196	Other Expenses (06)	27,853	1,380	0	0	29,233
220	1199	Sub-total	32,189	1,380	0	0	33,569

Textbooks (2410)

222	1205	Supplies and Materials (05)	7,122	0	0	0	7,122
-----	------	-----------------------------	-------	---	---	---	-------

Other Instructional Materials (2415)

224	1224	Contracted Services (04)	1,500	0	0	0	1,500
225	1225	Supplies and Materials (05)	13,722	0	0	0	13,722
226	1226	Other Expenses (06)	0	0	0	0	0
227	1229	Sub-total	15,222	0	0	0	15,222

Instructional Equipment (2420)

229	1244	Contracted Services (04)	0	0	0	0	0
230	1245	Supplies and Materials (05)	51,973	5,657	0	0	57,630
231	1246	Other Expenses (06)	88,223	5,022	0	0	93,245
232	1249	Sub-total	140,196	10,679	0	0	150,875

General Supplies (2430)

234	1265	Supplies and Materials (05)	110,713	11,088	0	0	121,801
-----	------	-----------------------------	---------	--------	---	---	---------

Other Instructional Services (2440)

236	1283	Other Salaries (03)	0	0	0	0	0
237	1284	Contracted Services (04)	0	0	0	0	0
238	1285	Supplies and Materials (05)	0	0	0	0	0
239	1286	Other Expenses (06)	0	1,676	0	0	1,676
240	1289	Sub-total	0	1,676	0	0	1,676

**SCHEDULE 1**

**REVENUE AND EXPENDITURE SUMMARY**

**II. EXPENDITURES**

**A. BY SCHOOL COMMITTEE**

1	2	3	4	5	6
REGULAR DAY	SPECIAL EDUCATION	CH 74 VOC- ATIONAL/ TECHNICAL	OTHER PROGRAMS	UNDESTRIC- UTED	TOTAL

**Substitutes, Short Term (2325)**

177	1063	Other Salaries (03)	112,378	0	0	0	112,378
178	1064	Contracted Services (04)	0	0	0	0	0
179	1069	<b>Sub-total</b>	112,378	0	0	0	112,378

**All Non-Clerical Paraprofessionals/Instructional Assistants (2330)**

181	1083	Other Salaries (03)	229,196	813,067	0	0	1,042,263
182	1084	Contracted Services (04)	4,481	18,039	0	0	22,520
183	1089	<b>Sub-total</b>	233,677	831,106	0	0	1,064,783

**Librarians and Media Center Directors (2340)**

185	1101	Professional Salaries (01)				422,338	422,338
186	1102	Clerical Salaries (02)				0	0
187	1103	Other Salaries (03)				0	0
188	1109	<b>Sub-total</b>				422,338	422,338

**Distance Learning and Online Coursework (2345) (Including Tuition for Dual Enrollment and SPED Transition Programs)**

190	1111	Contracted Services (04)	0	0	0	0	0
191	1112	Supplies and Materials (05)	0	0	0	0	0
192	1113	Other Expenses (06)	0	0	0	0	0
193	1115	<b>Sub-total</b>	0	0	0	0	0

**Professional Development Leadership (2351)**

195	1121	Professional Salaries (01)				0	0
196	1122	Clerical Salaries (02)				0	0
197	1123	Other Salaries (03)				0	0
198	1124	Contracted Services (04)				0	0
199	1125	Supplies and Materials (05)				0	0
200	1126	Other Expenses (06)				0	0
201	1129	<b>Sub-total</b>				0	0

**Instructional Coaches (2352)**

203	1131	Professional Salaries (01)	0	0	0	0	0
204	1134	Contracted Services (04)	0	0	0	0	0
205	1135	Supplies and Materials (05)	0	0	0	0	0
206	1136	Other Expenses (06)	12,887	0	0	0	12,887
207	1139	<b>Sub-total</b>	12,887	0	0	0	12,887

**Stipends for Teachers Providing Instructional Coaching (2354)**

209	1151	Other Salaries (03)	0	0	0	0	0
-----	------	---------------------	---	---	---	---	---

**Costs for Instructional Staff to Attend Professional Development (2356)**

211	1171	Professional Salaries (01)	340	0	0	0	340
212	1173	Other Salaries (03)	12,709	6,259	0	0	18,968
213	1175	Supplies and Materials (05)	0	0	0	0	0
214	1176	Other Expenses (06)	54,250	11,578	0	0	65,828
215	1179	<b>Sub-total</b>	67,299	17,837	0	0	85,136





**SCHEDULE 1**

**REVENUE AND EXPENDITURE SUMMARY**

**II. EXPENDITURES**

**A. BY SCHOOL COMMITTEES**

1	2	3	4	5	6
REGULAR DAY	SPECIAL EDUCATION	CH 74 VOC- ATIONAL/ TECHNICAL	OTHER PROGRAMS	UNNOTED	TOTAL

**School Leadership-Building (2210)**

150	921	Professional Salaries (01)				348,203	848,203
151	922	Clerical Salaries (02)				361,820	361,820
152	923	Other Salaries (03)				0	0
153	924	Contracted Services (04)				74,105	74,105
154	925	Supplies and Materials (05)				51,652	51,652
155	926	Other Expenses (06)				6,577	6,577
155	929	<b>Sub-total</b>				1,342,357	1,342,357

**Administrative Technology and Support - Schools (2250)**

158	964	Contracted Services (04)	0	0	0	0	0
159	965	Supplies and Materials (05)	0	2,685	0	0	2,685
160	966	Other Expenses (06)	0	0	0	0	0
161	969	<b>Sub-total</b>	0	2,685	0	0	2,685

**Teachers (2305)**

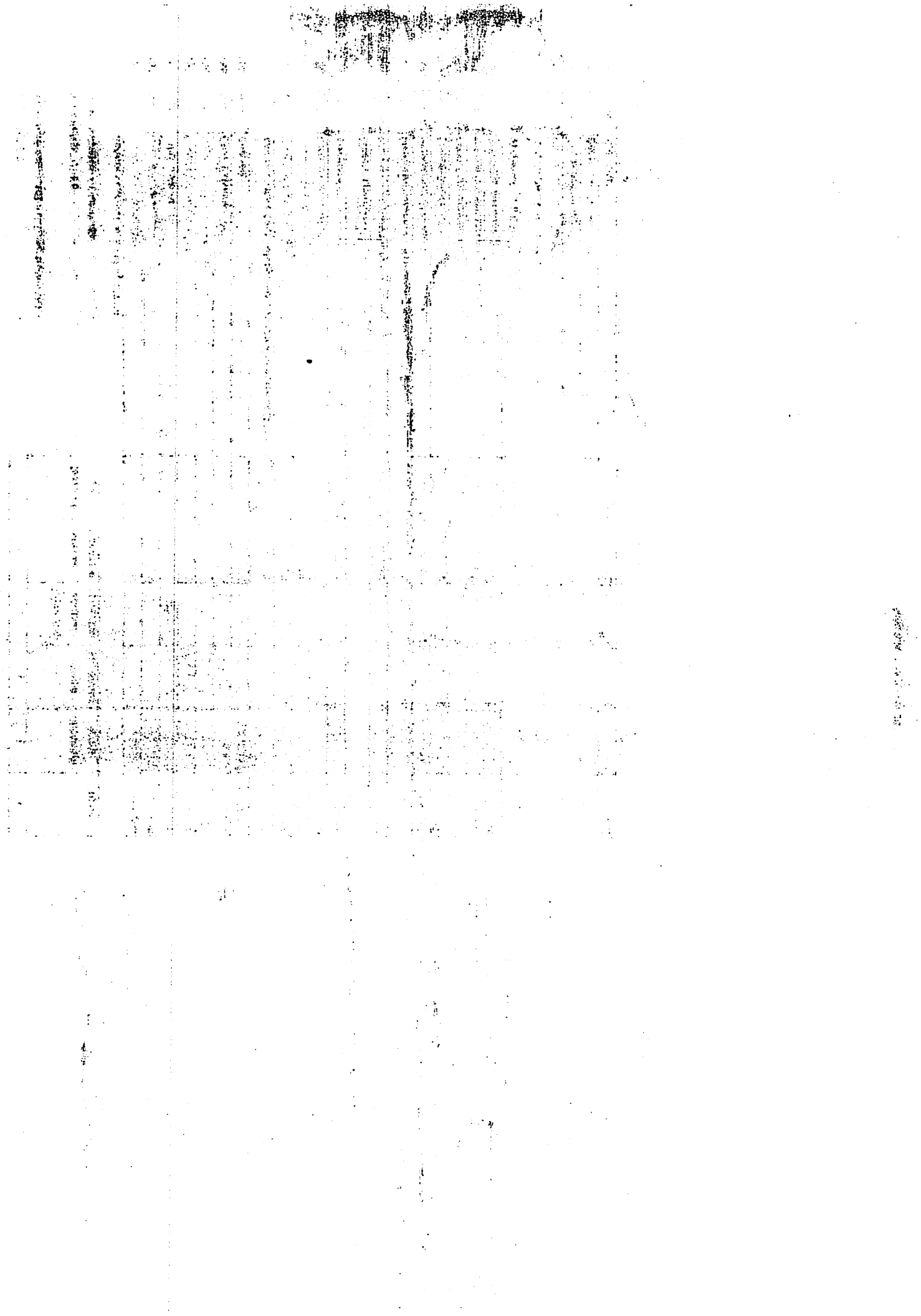
163	961	Professional Salaries (01)	9,651,868	2,515,301	0	0	12,167,169
-----	-----	----------------------------	-----------	-----------	---	---	------------

**Medical/ Therapeutic Services (2320)**

165	1041	Professional Salaries (01)	0	601,795	0	0	601,795
166	1042	Clerical Salaries (02)	0	0	0	0	0
107	1043	Other Salaries (03)	0	0	0	0	0
168	1044	Contracted Services (04)	0	131,237	0	0	131,237
169 *	1045	Other Expenses (06)	0	0	0	0	0
170	1049	<b>Sub-total</b>	0	733,032	0	0	733,032

**Substitutes, Long Term (2324)**

172	1051	Professional Salaries (01)	0	0	0	0	0
173	1053	Other Salaries (03)	16,591	0	0	0	16,591
174	1054	Contracted Services (04)	0	0	0	0	0
175	1059	<b>Sub-total</b>	16,591	0	0	0	16,591



**SCHEDULE 1**

**REVENUE AND EXPENDITURE SUMMARY**

**II. EXPENDITURES**

**A. BY SCHOOL COMMITTEE**

1	2	3	4	5	6
REGULAR DAY	SPECIAL EDUCATION	CH 74 VOC- ATIONAL/ TECHNICAL	OTHER PROGRAMS	UNDISTRICT- UTED	TOTAL

**Administrative Technology-Districtwide (1450)**

121	864	Contracted Services (04)					0
122	865	Supplies and Materials (05)					0
123	866	Other Expenses (06)					0
124	869	<i>Sub-total</i>				0	0

**Curriculum Directors and Department Heads (Supervisory) (2110)**

126	881	Professional Salaries (01)	400,196	390,524	0	0	790,720
127	882	Clerical Salaries (02)	53,834	110,527	0	0	164,361
128	883	Other Salaries (03)	0	0	0	0	0
129	884	Contracted Services (04)	0	15,881	0	0	15,881
130	885	Supplies and Materials (05)	4,177	4,558	0	0	8,735
131	886	Other Expenses (06)	124	718	0	0	842
132	889	<i>Sub-total</i>	458,331	522,208	0	0	980,539

**Curriculum Directors and Department Heads (Non-Supervisory) (2120)**

134	901	Professional Salaries (01)	0	0	0	0	0
135	902	Clerical Salaries (02)	0	0	0	0	0
136	903	Other Salaries (03)	0	0	0	0	0
137	904	Contracted Services (04)	0	0	0	0	0
138	905	Supplies and Materials (05)	0	0	0	0	0
139	906	Other Expenses (06)	0	0	0	0	0
140	909	<i>Sub-total</i>	0	0	0	0	0

**Instructional Technology Leadership and Training (2130)**

142	911	Professional Salaries (01)	0	0	0	0	0
143	912	Clerical Salaries (02)	0	0	0	0	0
144	913	Other Salaries (03)	0	0	0	0	0
145	914	Contracted Services (04)	0	0	0	0	0
146	915	Supplies and Materials (05)	0	0	0	0	0
147	916	Other Expenses (06)	0	0	0	0	0
148	917	<i>Sub-total</i>	0	0	0	0	0

100

**SCHEDULE 1**

**REVENUE AND EXPENDITURE SUMMARY**

**II. EXPENDITURES**

**A. BY SCHOOL COMMITTEE**

1	2	3	4	5	6
REGULAR DAY	SPECIAL EDUCATION	CH 74 VOC- ATIONAL/ TECHNICAL	OTHER PROGRAMS	UNDISTRICTED	TOTAL

**Business and Finance (1410)**

92	781	Professional Salaries (01)				153,595	153,595
93	782	Clerical Salaries (02)				3,813	3,813
94	783	Other Salaries (03)				232,125	232,125
95	784	Contracted Services (04)				60,255	60,255
96	785	Supplies and Materials (05)				17,038	17,038
97	786	Other Expenses (06)				20,107	20,107
98	789	<b>Sub-total</b>				486,933	486,933

**Human Resources and Benefits (1420)**

100	801	Professional Salaries (01)				69,228	69,228
101	802	Clerical Salaries (02)				4,387	4,387
102	803	Other Salaries (03)					0
103	804	Contracted Services (04)					0
104	805	Supplies and Materials (05)					0
105	806	Other Expenses (06)				439	439
106	809	<b>Sub-total</b>				74,054	74,054

**Legal Service for School Committee (1430)**

108	821	Professional Salaries (01)					0
109	822	Clerical Salaries (02)					0
110	823	Other Salaries (03)					0
111	824	Contracted Services (04)				20,720	20,720
112	825	Supplies and Materials (05)					0
113	826	Other Expenses (06)					0
114	829	<b>Sub-total</b>				20,720	20,720

**Legal Settlements (1435)**

116	844	Contracted Services (04)		49,203			49,203
117	845	Supplies and Materials (05)					0
118	846	Other Expenses (06)					0
119	849	<b>Sub-total</b>	0	49,203	0	0	49,203

**SCHEDULE 1**

**REVENUE AND EXPENDITURE SUMMARY**

**II. EXPENDITURES**

**A. BY SCHOOL COMMITTEE**

1	2	3	4	5	6
REGULAR DAY	SPECIAL EDUCATION	CH 74 VOC- ATIONAL/ TECHNICAL	OTHER PROGRAMS	UNDISCRE- TIZED	TOTAL

**School Committee (1110)**

61	702	Clerical Salaries (02)				7,001	7,001
62	703	Other Salaries (03)					0
63	704	Contracted Services (04)				17,388	17,388
64	705	Supplies and Materials (05)				571	571
65	706	Other Expenses (06)				12,232	12,232
66	709	<i>Sub-total</i>				37,192	37,192

**Superintendent (1210)**

68	721	Professional Salaries (01)				187,494	187,494
69	722	Clerical Salaries (02)				66,423	66,423
70	723	Other Salaries (03)					0
71	724	Contracted Services (04)				2,350	2,350
72	725	Supplies and Materials (05)				5,922	5,922
73	726	Other Expenses (06)				35,823	35,823
74	729	<i>Sub-total</i>				298,012	298,012

**Assistant Superintendents (1220)**

76	741	Professional Salaries (01)					0
77	742	Clerical Salaries (02)					0
78	743	Other Salaries (03)					0
79	744	Contracted Services (04)					0
80	745	Supplies and Materials (05)					0
81	746	Other Expenses (06)					0
82	749	<i>Sub-total</i>				0	0

**Other District-Wide Administration (1230)**

84	761	Professional Salaries (01)					0
85	762	Clerical Salaries (02)					0
86	763	Other Salaries (03)					0
87	764	Contracted Services (04)					0
88	765	Supplies and Materials (05)					0
89	766	Other Expenses (06)					0
90	769	<i>Sub-total</i>				0	0

50	650	Other Local Receipts						189,944	189,944
51	660	Private Grants	0	0	0	77,087	2,203	79,280	
52	670	TOTAL REVENUE REVOLVING & SPECIAL FUNDS	485,700	43,459	0	179,790	766,886	1,485,577	



## Massachusetts Department of Elementary and Secondary Education FY20 END OF YEAR FINANCIAL REPORT

**675 Hamilton Wenham**

For all related information go to: <http://www.doe.mass.edu/finance/accounting/>

**SCHEDULE 1  
REVENUE AND EXPENDITURE SUMMARY**

1	2	3	4	5	6
REGULAR DAY	SPECIAL EDUCATION	CH 74 VOC- ATIONAL/ TECHNICAL	OTHER PROGRAMS	UNDISTRIB- UTED	TOTAL

**I. REVENUES**

Row	Line	A. REVENUE FROM LOCAL SOURCES					
15	10	Assessments Received by Regional Schools				29,571,568	29,571,568
16	20	E & D Fund Appropriations FY20: Revenues to Regional District					0
17	30	Tuition From Individuals					0
18	40	Tuition From Other Districts in Comm.					0
19	50	Tuition From Districts in Other States					0
20	60	Previous Yr Unexpended Encumbrances (Carry Forward)				26,108	26,108
21	70	Transportation Fees					0
22	80	Earnings on Investments				19,661	19,661
23	90	Rental of School Facilities					0
24	100	Other Revenue				2,760	2,760
25	101	Medical Care and Assistance		88,455			88,455
26	105	Non Revenue Receipts					0
27	110	TOTAL REVENUE FROM LOCAL SOURCES	0	88,455	0	0	29,620,097
		B. REVENUE FROM STATE AID	State aid is not reported by program				
29	125	School Aid (Chapter 70)				3,711,406	3,711,406
30	130	Mass. School Building Authority Construction Aid	Contract		Other		0
31	140	Pupil Transportation (Ch. 71,71A,71B,74)				462,913	462,913
32	170	Charter Tuition Reimbursements and Facilities Aid	Charter Reir	1,542	Facilities	0	1,542
33	180	Circuit Breaker				1,121,481	1,121,481
34	190	Foundation Reserve, State Impact Aid, and Regional Bonus Aid				0	0
35	200	TOTAL REVENUE FROM STATE AID					5,297,342
		C. REVENUE FROM FEDERAL GRANTS					
38	300	ESE Administered Grants	108,222	429,154	0	102,694	640,080
39	481	Other Federal Grants		13,365			13,365
40	490	TOTAL REVENUE FEDERAL GRANTS	108,222	442,529	0	102,694	653,445
		D. REVENUE FROM STATE GRANTS					
42	510	ESE Administered Grants	0	0	0	0	0
43	590	Other State Grants			2,400	49,785	52,185
44	600	TOTAL REVENUE STATE GRANTS	0	0	0	2,400	49,785
		E. REVENUE- REVOLVING & SPECIAL FUNDS					
46	610	School Lunch Receipts				389,759	389,759
47	620	Athletic Receipts				184,982	184,982
48	630	Tuition Receipts-School Choice	495,700	43,499	0		539,199
49	640	Tuition Receipts-Other					102,703